



EPCM

ENGINEERING | PROCUREMENT | CONSTRUCTION | MANAGEMENT

Specializing in EPCM Solutions for Conveyor Systems, Workshops, Warehouses, Camps, Housing, Jetty, Ports, Storage Tanks, Hauling Roads.

(CAPEX) Infrastructure : Coal, Copper, Gold, Nickel, Sugar, Fertilizer, and Power Generation Industries.

Contact Us :

+ 62 8111 910 3700 salesteam@rexlineengineering.com

WWW.REXLINEENGINEERING.COM



INDEX

- 03 Corporate Overview**
PT. Rexline Engineering Indonesia
- 06 Company Legality And Certificates**
PT. Rexline Engineering Indonesia
- 07 Engineering Service**
 - Civil & Structural Engineering
 - Mechanical Engineering
 - Electrical & Instrumentation Engineering
- 11 Fabrication Services**
 - Steel Fabrication Capabilities
- 13 Quality Assurance & Control**
Core EPCM Services
- 14 Shipping And Logistics**
Core EPCM Services
- 15 Civil Works**
Core EPCM Services
- 16 Site Installation And Commissioning**
Core EPCM Services
- 17 Port, Jetty & Marine Infrastructure**
Major Infrastructure Solution
- 18 Crushing Stations**
Major Infrastructure Solution
- 19 Barge Loading Conveyor Systems**
Major Infrastructure Solution
- 20 Fuel Storage Tank Systems**
Major Infrastructure Solution
- 21 Industrial Housing Solutions**
Final Infrastructure & Support Service
- 22 Construction Camps**
Final Infrastructure & Support Service
- 23 Hauling Road Development**
Final Infrastructure & Support Service
- 24 Power & Electrical Systems**
Final Infrastructure & Support Service
- 25 Geotechnical & Survey Services**
Final Infrastructure & Support Service
- 26 Hse And Quality Management**
Final Infrastructure & Support Service
- 27 Certificates**
PT. Rexline Engineering Indonesia

Corporate Overview



PT. Rexline Engineering Indonesia

Global Strength, Local Excellence - Member of a leading Australian engineering group

PT. Rexline Engineering Indonesia stands at the forefront of Engineering, Procurement, and Construction Management (EPCM) company operating as part of a well-established Australian group with a strong international footprint. With a workforce of 750+ engineers, technicians, and field experts in Indonesia and headquarters in Australia, we are positioned to deliver end-to-end infrastructure and industrial solutions across Southeast Asia.

We specialize in large-scale industrial, mining, and infrastructure projects, offering clients unmatched technical capability, global standards, and local execution excellence.



What We Do

Design, Engineer, Procure, Fabricate, and Construct Critical Infrastructure for key industrial sectors. Our expertise spans:

- Bulk Material Handling Systems
- Conveyor Systems
- Transfer Stations
- Heavy Industrial Infrastructure
- Workshops & Warehouses
- Jetty, Ports & Marine Structures
- Storage Tanks & Silos
- Remote & Industrial Site Facilities
- Remote Camps & Housing
- Hauling Roads
- Access Bridges

These solutions are tailored for sectors such as:

- Mining (coal, copper, gold, nickel)
- Power Generation
- Fertilizer & Agro-industry
- Cement & Chemicals
- Logistics and Bulk Terminals

Our Capabilities

Backed by decades of engineering excellence, Rexline brings together the following core capabilities under one integrated structure:

Engineering Services

- Mechanical, Structural & Civil Design
- Electrical & Instrumentation
- Control System Architecture

Fabrication & Installation

- Precision Fabrication Facilities in Indonesia
- Modular Assembly & Site Installation

Project Execution

- EPC/EPCM Project Management
- Multisite Execution Capability
- Commissioning & Plant Handover

Support Services

- Capital Cost Estimation & Feasibility
- Material Flow Simulation & Optimization
- Procurement Assistance & Vendor Management
- 3D Modelling, CAD, and BIM Support



Why Choose Rexline Engineering Indonesia?

Proven Track Record

Successful execution of complex EPCM projects in challenging environments and remote locations.

Manpower & Machinery

Over 750 skilled personnel deployed across Indonesia with advanced fabrication plants, mobile equipment fleets, and site-ready teams.

Global Expertise, Local Strength

Access to Australian engineering excellence with local agility and compliance.

Integrated In-House Services

All major disciplines under one roof - ensuring streamlined delivery, cost control, and single-point accountability.

Industry Focused

Deep domain expertise in mining, power, fertilizer, and infrastructure sectors.

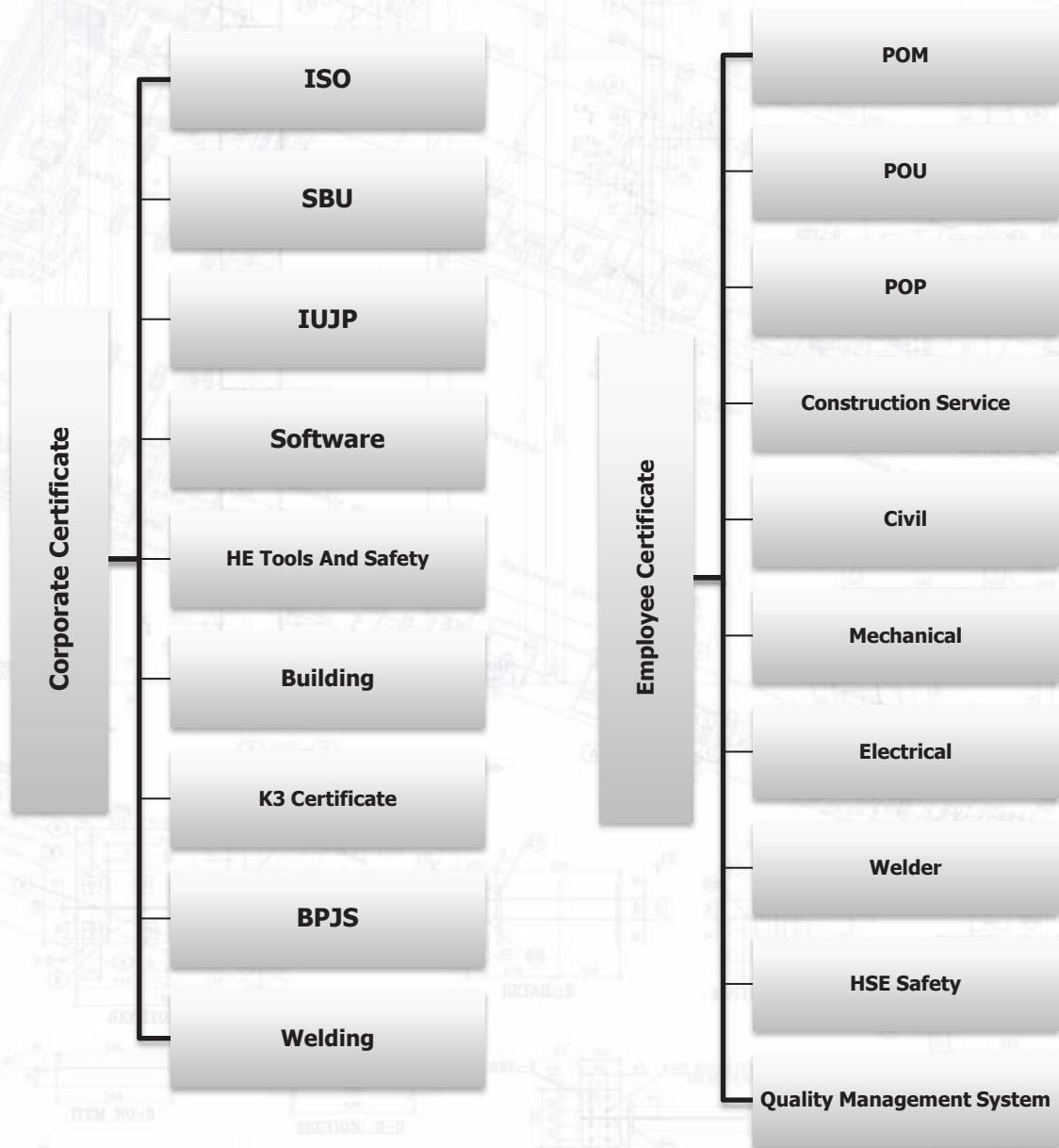
Safety & Compliance First

Full alignment with international HSE standards, quality systems, and risk management frameworks.



Full Certificate Details

Company Legality And Certificates



Improve reliability



Reduced risk of failure,
increased production

...while simultaneously bringing sustainable benefits to local communities and beyond



Made In Indonesia



Value Engineering



Reduced energy consumption
by an estimated 6-10%



Empower Local
Manpower

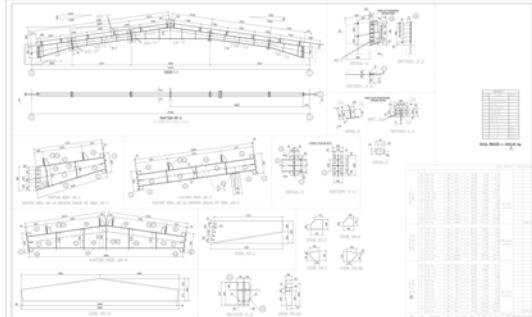
ENGINEERING SERVICES



Our Services

- All engineering designs and practices follow Indonesian SNI standards and applicable government construction codes.
- For structural, marine, and mechanical systems, Rexline integrates international codes including ACI, AISC, API, ASTM, ASME, and IEC to meet global compliance.
- Permit drawings and submissions adhere to local licensing procedures as mandated by the Ministry of Public Works (PU), Ministry of Transportation (Perhubungan), and MIGAS standards for fuel systems.
- Engineering software includes AutoCAD, Tekla, STAAD Pro, SolidWorks, Helix, and SAP2000.
- Compliance with both Indonesian SNI and international codes including ACI, AISC, ASTM, and API.

CIVIL & STRUCTURAL ENGINEERING

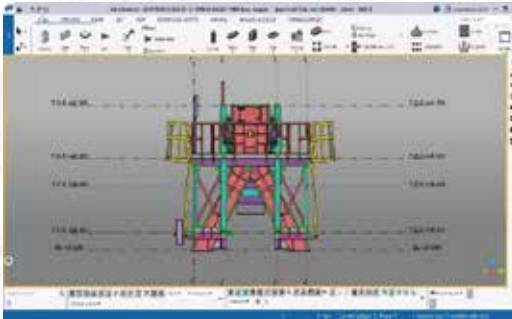


Our Services

- Foundation design for marine and land-based structures
- Structural analysis using STAAD Pro, Tekla Structures
- Design of pile caps, columns, beams, slabs, and jetty platforms
- Integration of seismic and soil geotechnical inputs
- Preparation of construction drawings and BOQs
- Compliance with SNI, ACI, and international building codes



MECHANICAL ENGINEERING

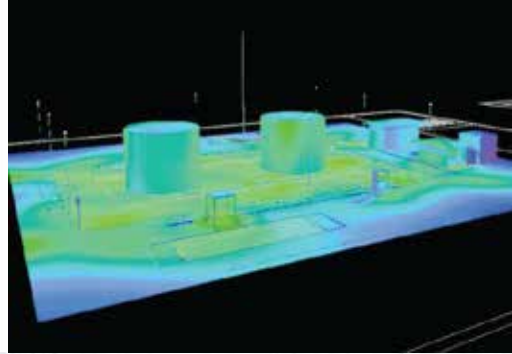
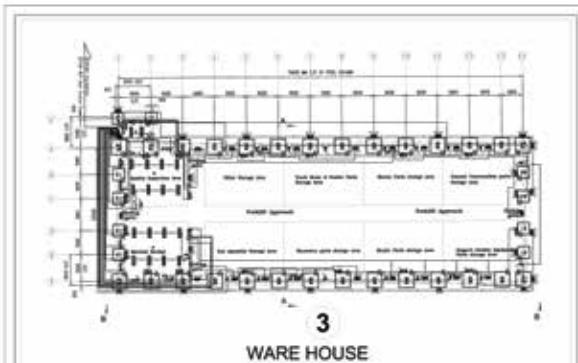


Our Services

- Design of crushing systems, conveyors, hoppers, and tanks
- Preparation of P&ID, GA, and fabrication drawings
- Thermal and stress analysis of mechanical systems
- Integration with electrical and automation systems
- Development of equipment lists and installation plans



ELECTRICAL & INSTRUMENTATION ENGINEERING



Our Services

- Design of LV/MV electrical systems and distribution panels
- Cable tray layout and single-line diagram preparation
- SCADA and PLC system integration
- Earthing, lightning protection, and power studies
- Instrumentation and control panel specifications

FABRICATION SERVICES

Core EPCM Services



Our Services

- Automated CNC plasma cutting up to 140mm cutting capacity, bending machine for 30mm (350 tonnes), and laser cutting for 15mm below, rolling machine 30mm, heavy duty lathe capacity 1.8 meter dia drum, milling machine, shearing machine, cutting machine.
- The facility employs 210 personnel across fabrication, QC, logistics, and surface treatment teams.
- Lamongan factory operates in two continuous shifts to meet high output demands.
- Dedicated sandblasting and painting rooms for surface protection.
- In-house production line for rollers and pulleys supporting conveyor and crushing systems.

STEEL FABRICATION CAPABILITIES

Core EPCM Services



Our Services

- 23,000 sqm fabrication yard in Lamongan, East Java
- Fabrication of structural steel, tanks, conveyors, and trestles
- ASME-certified welders and ISO 3834 fabrication practices
- Heavy-duty modular fabrication for jetty and plant structures
- Pre-assembly and trial fitting before delivery to site

QUALITY ASSURANCE & CONTROL

Core EPCM Services



Our Services

- Visual and dimensional inspections on all fabricated items
- Ultrasonic Testing (UT), Radiographic Testing (RT), and Magnetic Particle Testing (MPT)
- Hydrostatic testing for tanks and pressure vessels
- Coating inspection and dry film thickness (DFT) testing
- Documentation of Inspection Test Plans (ITPs) and Quality Dossiers

SHIPPING AND LOGISTICS

Core EPCM Services



Our Services

- In-house logistics team for coordination of sea and land freight
- Break-bulk and containerized shipping from fabrication yard
- Export packaging, crating, and container stuffing
- Customs documentation and clearance support
- Delivery tracking from yard to job site
- Heavy lift coordination for over-dimensional cargo

CIVIL WORKS

Core EPCM Services



Our Services

- Site clearance, grubbing, and earthwork operations
- Foundation works including bored piles and footings
- Paving, concrete flooring, and plinth beam construction
- Stormwater drainage systems and culvert installation
- Gabion walls, slope protection, and road embankment
- Heavy-duty pavement for workshops and warehouses

SITE INSTALLATION AND COMMISSIONING

Core EPCM Services



Our Services

- Steel structure erection using cranes and hydraulic jacks
- Mechanical equipment alignment, bolting, and coupling
- Electrical panel mounting, cable laying, and terminations
- Instrumentation, testing, and commissioning of systems
- Pre-startup checks and cold/hot commissioning support
- HSE supervision and site safety audits during installation

PORT, JETTY & MARINE INFRASTRUCTURE

Major Infrastructure Solutions



Our Services

- Design and construction of Berthing pile supported jetties for 5,000 – 50,000 DWT vessels
- Design and development of cargo yards and loading aprons
- Installation of concrete or steel piles using marine structure
- Fabrication and installation of cast-in-situ and precast deck systems
- Construction of mooring and breasting dolphins fenders and ladders
- Walkway trestles and pipe racks connecting jetty to shore
- Hot-dip galvanization and marine-grade coatings for corrosion resistance
- Construction of security fencing, automated gates, and lighting
- Integration of port facilities with conveyor and jetty systems
- Stormwater drainage and asphalt concrete surfacing
- Accommodation for port control and administration buildings
- Stockpile Management Handling
- Loading and Unloading Rampdoor
- Operational Management Service

CRUSHING STATIONS

Major Infrastructure Solutions



Updated Crusher Systems Capacity

- Multiple screening solutions including rotary and vibrating screens.
- Self-cleaning magnetic separators integrated with conveyors.
- Reclaim feeders for controlled material flow.
- Primary and secondary crushing configurations.
- Complete solutions including jaw crushers and roller crushers.
- Crusher systems offered from 100 TPH up to 2000 TPH.
- Dedicated sandblasting and painting rooms for surface protection.
- Roller pulley manufacturing line with complete QA/QC instrumentation.
- Design and supply of skid-mounted or mobile crushing units (500–700 TPH)
- Primary jaw crushers with grizzly feeders for 250–300 mm input
- Secondary cone crushers with vibrating screens for 50 mm output
- Dust suppression and water spray systems
- Mounting of crushers on steel skids for ease of relocation
- Integration with MCC panels, gensets, lighting, and safety systems

BARGE LOADING CONVEYOR SYSTEMS

Major Infrastructure Solutions



Our Services

- Overland conveyors from crushing station to barge loading jetty
- Design of transfer towers, conveyor galleries, and radial stackers
- Steel trestles for conveyor alignment over uneven terrain
- Conveyor belt safety: misalignment, pull-cord, and rip sensors
- Dust control chutes and retractable telescopic loading heads
- Drive head, tail pulley, take-up unit, and counterweight installation

FUEL STORAGE TANK SYSTEMS

Major Infrastructure Solutions



Our Services

- Design and fabrication of RexStor® fuel tanks: 62KL, 500KL, and 2000KL capacities
- Double-walled tanks with bund walls and leak detection
- Integrated dispenser pumps rated 40–300 LPM with canopies
- Installation of flame arrestors, pressure vacuum vents, and float gauges
- Coating systems for fuel compatibility and corrosion resistance
- Hydrotest, certification, and compliance with MIGAS and API 650 standards

INDUSTRIAL HOUSING SOLUTIONS

Final Infrastructure & Support Services



Our Services

- Design and construction of staff housing using Light Gauge Steel (LGSF)
- Modular units from 60–180 sqm with steel frames and foam concrete walls
- Quick assembly in remote sites using pre-engineered panels
- Thermal insulation and soundproofing for tropical environments
- Integration with solar lighting and water heating systems
- Flexible layouts for single, family, and dormitory arrangements

CONSTRUCTION CAMPS

Final Infrastructure & Support Services



Our Services

- Turnkey camp solutions for 50–500 personnel
- Prefabricated dormitories, offices, kitchens, and sanitary blocks
- Complete MEP services with solar/diesel backup generators
- Water treatment, sewage systems, and fire protection
- Perimeter fencing, CCTV, and access control integration

HAULING ROAD DEVELOPMENT

Final Infrastructure & Support Services



Our Services

- Design of 30T-100T heavy haulage access roads
- Grubbing, cut-and-fill balancing, and compaction
- Crushed stone base layers and geotextile stabilization
- Drainage design: culverts, side ditches, and cross drains
- Signage, lighting, and gradient control for safe operations

POWER & ELECTRICAL SYSTEMS

Final Infrastructure & Support Services



Our Services

- Generator room design, cabling, and synchronization panels
- Transformer installation and switchyard construction
- Cable routing for control, lighting, and power loads
- Earthing systems, lightning protection, and surge arrestors
- 24/7 backup solutions using solar-diesel hybrid systems

GEOTECHNICAL & SURVEY SERVICES

Final Infrastructure & Support Services



Our Services

- Generator room design, cabling, and synchronization panels
- Transformer installation and switchyard construction
- Cable routing for control, lighting, and power loads
- Earthing systems, lightning protection, and surge arrestors
- 24/7 backup solutions using solar-diesel hybrid systems

HSE AND QUALITY MANAGEMENT

Final Infrastructure & Support Services



Our Services

- HSE policies aligned with ISO 45001 : 2018 and Indonesian regulations
- Risk assessments, toolbox talks, and site safety inspections
- Permit to Work (PTW), Lockout-Tagout (LOTO), and emergency response
- Quality Dossiers, ITPs, and inspection checklists
- Client audits and third-party certification readiness

[illegible]



Construction Certificates



PEMERINTAH REPUBLIK INDONESIA

PERIZINAN BERUSAHA UNTUK MENUNJANG KEGIATAN USAHA SERTIFIKAT BADAN USAHA (SBU) KONSTRUKSI PB-UMKU: 912050371157200080001

Pemerintah Republik Indonesia menerbitkan Perizinan Berusaha Untuk Menunjang Kegiatan Usaha (PB-UMKU), yang merupakan Sertifikat Badan Usaha (SBU) konstruksi kepada Pelaku Usaha berikut ini:

- | | |
|---|---|
| 1. Nama Pelaku Usaha | : PT REXLINE ENGINEERING INDONESIA |
| 2. Nomor Induk Berusaha (NIB) | : 9120503711572 |
| 3. Alamat Kantor | : JL.MARGOMULYO 46 PERGUDANGAN MARGOMULYO
ANGTROPOLIS H9, Desa/Kelurahan Tambak Sarioso, Kec. Asem Rowo,
Kota Surabaya, Provinsi Jawa Timur
Kode Pos: 60183 |
| 4. Status Penanaman Modal | : Penanaman Modal Asing (PMA) |
| 5. Kode Klasifikasi Baku Lapangan Usaha : 41011 - Konstruksi Gedung Hunian Indonesia (KBLU) | |
| 6. Lokasi Usaha | : JL. MARGOMULYO 46 PERGUDANGAN MARGOMULYO
ANGTROPOLIS BLOK H9 Desa/Kelurahan Tambak Sarioso, Kec. Asem
Rowo, Kota Surabaya, Provinsi Jawa Timur
Kode Pos: 60183 |

Telah memenuhi persyaratan:

1. Standar Penetapan Kemampuan Badan Usaha Jasa Konstruksi (Pekerjaan Konstruksi dan/atau Pekerjaan Konstruksi Terintegrasi)
2. Standar Penetapan Kemampuan Badan Usaha Jasa Konstruksi (Jasa Konsultansi Konstruksi)

Lampiran Perizinan Berusaha Untuk Menunjang Kegiatan Usaha ini memuat data teknis yang merupakan bagian tidak terpisahkan dari dokumen ini. Pelaku Usaha tersebut di atas wajib menjalankan kegiatan usahanya sesuai dengan ketentuan perundang-undangan yang berlaku.

Diterbitkan tanggal: 18 Januari 2023

a.n. Menteri Pekerjaan Umum dan Perumahan Rakyat
Menteri Investasi/
Kepala Badan Koordinasi Penanaman Modal,



Ditandatangani secara elektronik

Dicetak tanggal: 18 Januari 2023

1. Dokumen ini diterbitkan sistem OSS berdasarkan data dari Pelaku Usaha, tersimpan dalam sistem OSS, yang menjadi tanggung jawab Pelaku Usaha.
2. Dalam hal terjadi perubahan di dokumen ini akan dilakukan perbaikan sebagaimana mestinya.
3. Dokumen ini telah dilindungi secara elektronik menggunakan sertifikat elektronik yang diterbitkan oleh BSS-ESDN.
4. Data lengkap Perizinan Berusaha dapat diperoleh melalui sistem OSS menggunakan kode akses





Consultant Certificates



PEMERINTAH REPUBLIK INDONESIA

PERIZINAN BERUSAHA UNTUK MENUNJANG KEGIATAN USAHA SERTIFIKAT BADAN USAHA (SBU) KONSTRUKSI PB-UMKU: 130624005306700140001

Pemerintah Republik Indonesia menerbitkan Perizinan Berusaha Untuk Menunjang Kegiatan Usaha (PB-UMKU), yang merupakan Sertifikat Badan Usaha (SBU) konstruksi kepada Pelaku Usaha berikut ini:

- | | |
|--|---|
| 1. Nama Pelaku Usaha | : PT REXLINE ENGINEERING INDONESIA |
| 2. Nomor Induk Berusaha (NIB) | : 9120503711572 |
| 3. Alamat Kantor | : JL RAYA KUPANG BARU NOMOR 74 Desa/Kelurahan Sonokwijen
Kec. Sukomanunggal Kota Surabaya, Provinsi Jawa Timur
Kode Pos: 60188 |
| 4. Status Penanaman Modal | : Penanaman Modal Asing (PMA) |
| 5. Kode Klasifikasi Baku Lapangan Usaha Indonesia (KBLI) | : 71101 - Aktivitas Arsitektur
71102 - Aktivitas Keinsinyuran Dan Konsultasi Teknis YBDI
74120 - Aktivitas Design Interior |
| 6. Lokasi Usaha | : JL RAYA KUPANG BARU NOMOR 74 Desa/Kelurahan Sonokwijen
Kec. Sukomanunggal, Kota Surabaya, Provinsi Jawa Timur
Kode Pos: 60188 |

Telah Memenuhi Persyaratan:

1. Standar Penetapan Kemampuan Badan Usaha Jasa Konstruksi (Pekerjaan Konstruksi dan/atau Pekerjaan Konstruksi Terintegrasi)

Lampiran Perizinan Berusaha Untuk Menunjang Kegiatan Usaha ini memuat data teknis yang merupakan bagian tidak terpisahkan dari dokumen ini. Pelaku Usaha tersebut di atas wajib menjalankan kegiatan usahanya sesuai dengan ketentuan perundang-undangan yang berlaku.

Diterbitkan tanggal: 06 Januari 2025

a.n. Menteri Pekerjaan Umum dan Perumahan Rakyat
Menteri Investasi/
Kepala Badan Koordinasi Penanaman Modal,



Ditandatangani secara elektronik

Dicetak tanggal: 06 Januari 2025

1. Dokumen ini diterbitkan sistem OSS berdasarkan data dari Pelaku Usaha, tersimpan dalam sistem OSS, yang menjadi tanggung jawab Pelaku Usaha.
2. Dalam hal terjadi kekeliruan isi dokumen ini akan dilakukan perbaikan selagi-mana mungkin.
3. Dokumen ini telah ditandatangani secara elektronik menggunakan sertifikat elektronik yang diterbitkan oleh BSR-BSSN.
4. Data lampiran Perizinan Berusaha dapat diperbaiki melalui sistem OSS menggunakan hak akses.





Mechanical Certificates



PEMERINTAH REPUBLIK INDONESIA

PERIZINAN BERUSAHA UNTUK MENUNJANG KEGIATAN USAHA SERTIFIKAT BADAN USAHA (SBU) KONSTRUKSI

PB-UMKU: 912050371157200050003

Pemerintah Republik Indonesia menerbitkan Perizinan Berusaha Untuk Menunjang Kegiatan Usaha (PB-UMKU), yang merupakan Sertifikat Badan Usaha (SBU) konstruksi kepada Pelaku Usaha berikut ini:

- | | |
|---|--|
| 1. Nama Pelaku Usaha | : PT REXLINE ENGINEERING INDONESIA |
| 2. Nomor Induk Berusaha (NIB) | : 9120503711572 |
| 3. Alamat Kantor | : JL.MARGOMULYO 48 PERGUDANGAN MARGOMULYO
ANGTROPOLIS H9, Kota Surabaya, Provinsi Jawa Timur
Kode Pos: 60183 |
| 4. Status Penanaman Modal | : Penanaman Modal Asing (PMA) |
| 5. Kode Klasifikasi Baku Lapangan Usaha | : 43291 - Instalasi Mekanikal Indonesia (KBLI) |
| 6. Lokasi Usaha | : JL MARGOMULYO 48 PERGUDANGAN MARGOMULYO
ANGTROPOLIS BLOK H9 Desa/Kelurahan Tambak Sarioso, Kec. Asem
Rowo, Kota Surabaya, Provinsi Jawa Timur
Kode Pos: 60813 |

Telah memenuhi persyaratan:

1. Standar Penetapan Kemampuan Badan Usaha Jasa Konstruksi (Pekerjaan Konstruksi dan/atau Pekerjaan Konstruksi Terintegrasi)
2. Standar Penetapan Kemampuan Badan Usaha Jasa Konstruksi (Jasa Konsultasi Konstruksi)

Lampiran Perizinan Berusaha Untuk Menunjang Kegiatan Usaha ini memuat data teknis yang merupakan bagian tidak terpisahkan dari dokumen ini. Pelaku Usaha tersebut di atas wajib menjalankan kegiatan usahanya sesuai dengan ketentuan perundang-undangan yang berlaku.

Diterbitkan tanggal: 06 Desember 2023

a.n. Menteri Pekerjaan Umum dan Perumahan Rakyat
Menteri Investasi/
Kepala Badan Koordinasi Penanaman Modal,



Ditandatangani secara elektronik

Dicetak tanggal: 06 Desember 2023

1. Dokumen ini diterbitkan sistem OSS berdasarkan data dari Pelaku Usaha, tersimpan dalam sistem OSS, yang menjadi tanggung jawab Pelaku Usaha.
2. Dalam hal terjadi kekeliruan isi dokumen ini akan ditanyakan, perbaikan sebagaimana mestinya.
3. Dokumen ini telah ditandatangani secara elektronik menggunakan sertifikat elektronik yang diterbitkan oleh BSI-E-BSSM.
4. Data kepegawaian Perizinan Berusaha dapat diperoleh melalui sistem OSS menggunakan hak akses.



REXLINE
ENGINEERING



Call Us For More Information

Sales Contact Details :

Akhil : +(62) 811 1910 3695

Rani : +(62) 811 1910 3700

Email : salesteam@rexlineengineering.com

Head Office

Jl. Raya Kupang Baru No.74, Sonokwijenan, Kecamatan
Sukomanunggal, Surabaya, Jawa Timur 60189

Site Office

Jalan Kolonel Untung Suropati Nomor 69, Sungai Lunuk, Kec.
Tanah Siang, Kabupaten Murung Raya, Kalimantan Tengah
73911

Heavy Fabrication

KM10 Jalan Raya Mantub, Dsn. Takeranklanting
Ds. Takeranklanting, Kec. Tikung, Lamongan
Jawa Timur 62280