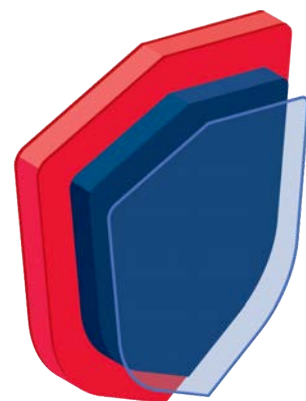




REXLINE ENGINEERING INDONESIA

FABRICATION CATALOGUE



REXLINE
ENGINEERING

EPCMIM

Engineering Procurement Construction Management & In-house Manufacturing

Head Office

Jl. Raya Kupang Baru No.74, Sonokwijenan, Kec.
Sukomanunggal, Surabaya, Jawa Timur 60189, Indonesia

salesteam@rexlineengineering.com
+62 811 1910 3695 or +62 811 1910 3700

Heavy Fabrication

KM10 Jalan Raya Mantub, Dsn.Takeranklating
Takeranklating, Kec. Tikung, Lamongan Jawa Timur
62280

INTRODUCTION

ABOUT OUR COMPANY

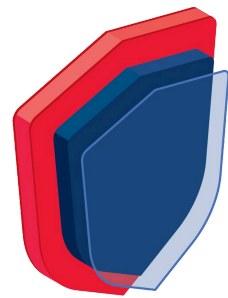
ABOUT US

Rexline Engineering Indonesia, a member of an Australian group of companies, stands out as a prominent EPCM contractor and fabricator serving the mining, power plant, and chemical processing industries. The company boasts a full suite of in-house capabilities, including design, mechanical, electrical, and civil engineering expertise, complemented by an internal fabrication and installation team. This integrated approach allows Rexline to offer comprehensive solutions tailored to the unique needs of clients in these critical sectors.

We can help you with many facets of engineering in your business. With the tight network of specialized engineering and procurement partners to keep only the best involved with their project and keeping costs down to help with project advancement.

Rexline Engineering Indonesia has established a strong reputation for providing heavy fabrication work to some of the largest mines globally. Operating from their Indonesian factory, the company specializes in manufacturing and replacing OEM equipment for end users in the mining industry. With a comprehensive range of capabilities, Rexline offers design, manufacturing, and commissioning services tailored to meet the specific requirements of their clients.

This level of expertise positions Rexline as a valuable partner for mining operations seeking reliable and customized equipment solutions.



REXLINE
ENGINEERING

REXLINE ENGINEERING INDONESIA'S CAPABILITIES ARE:

- Mechanical and Structural Engineering
- Electrical and Control Engineering
- Port Civil Engineering, Shipping Logistics
- Project Feasibility Design & Estimate
- Capital Cost Equipment & System
- Engineering & Estimates
- Site Systems Audit & Evaluation
- Existing Plant Equipment
- Full Individual Equipment & System Design
- Bid Evaluation of Proposed Material
- Handling Equipment Purchases
- Structural and Mechanical Cad Detailing
- Dem Material Flow Analysis and Transfer Chute
- Design
- 3D Modeling for Design & Proposal Presentation
- On Site Supervision and Construction Assistance.

IN-HOUSE DESIGN & FABRICATION

- Introduction About Our Company	
- Degreasing Machinefor Bullets (Indonesian Defense)	4
- Gantry In-House (12 m x 36 m rail system) SFW 7,5 Tonnes	5
- Transfer Chutes (Andritz OEM)	6
- Skirt Board System (PLN Sebalang)	7
- Fertilizer Process Heavy Equipment	8
- Stand Steel (SFWL 75-100 tonnage) - Thriveni KPC Operations	10
- Forkloader Volvo (OEM Parts) - Thriveni KPC Operations	12
- Structure Conveyor (35 Sets Dupan Anugraha Saraswaty)	14
- Foldable Container Fabrication (IMR Green)	15
- Design & Fabricate 40ft Container Office/Camp (Thriveni KPC Operations)	17
- Ramp Door 100 Tonne (Bama Sinarmas Mining)	19
- Water Scraper Assembly (Cirebon Power Plant)	21
- Hardox & Cast Comb Scraper Flight Bar (Cirebon Power Plant)	22
- Design & Fabrication Conveyor Upper Structure (Cokal)	24
- Jetty Piling (Cokal)	27
- Loading Dock	28
- Lighting Pole (Bakrie)	29
- Tripper Car and Mobile Conveyor System	31
- Carry Roller	32
- Return Roller	33
- Bracket	34
- Tail Pulley	36
- Snub Pulley	37
- Bend Pulley	38
- Barbed Wire Fence	39
- Screw Feeder Nickel Mining & Operations	41
- Screen for Dual Flow Bend (PLN Jepara)	42
- CPO Tank	43
- TOP Fencing	44
- Jib Crane	45

IN-HOUSE DESIGN & FABRICATION

DEGREASING MACHINE FOR BULLETS (INDONESIAN DEFENSE)



GANTRY IN-HOUSE (12 meter x 36 meter rail system)
SFW 7.5 Tonnes

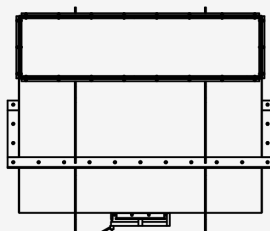
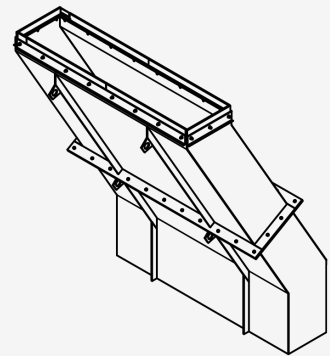
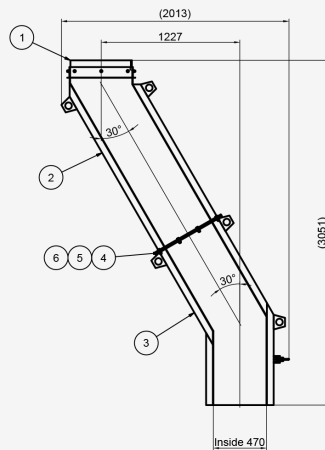
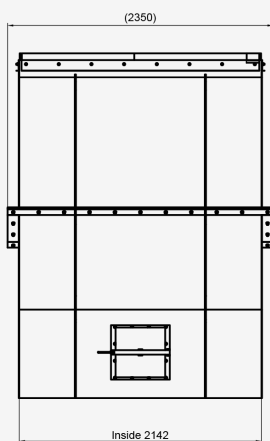


IN-HOUSE DESIGN & FABRICATION

TRANSFER CHUTES (ANDRITZ OEM)



DRAWING

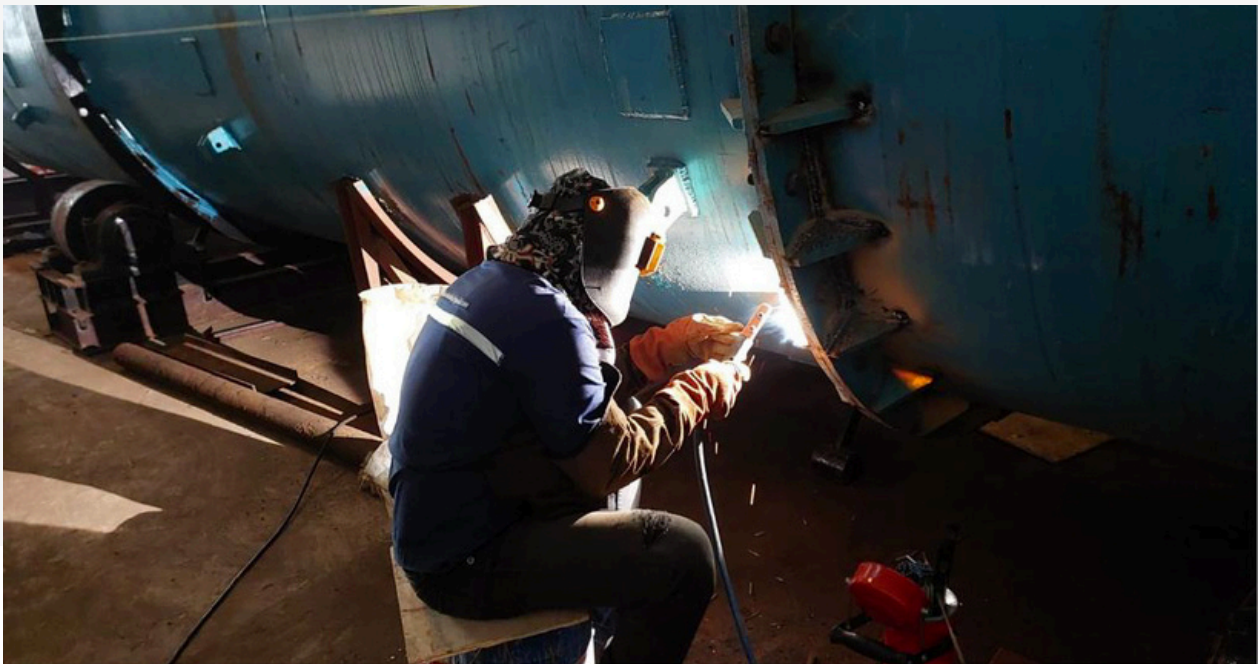


SKIRT BOARD SYSTEM (PLN SEBALANG)

[illegible]

IN-HOUSE DESIGN & FABRICATION

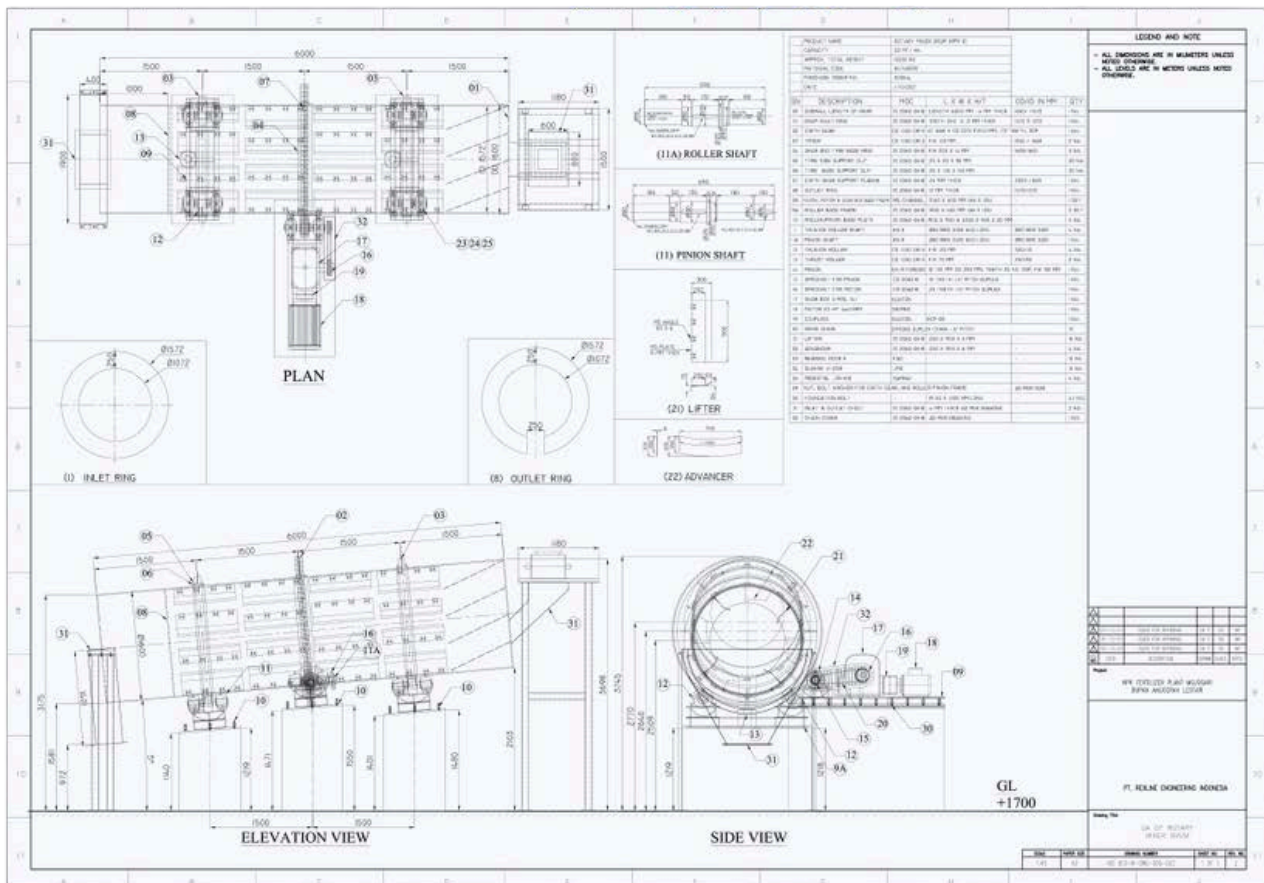
FERTILIZER PROCESS HEAVY EQUIPMENT
Rotary Dryer, Rotary Cooler, Rotary Granulator
(3.5m dia x 32m)



IN-HOUSE DESIGN & FABRICATION



DRAWING

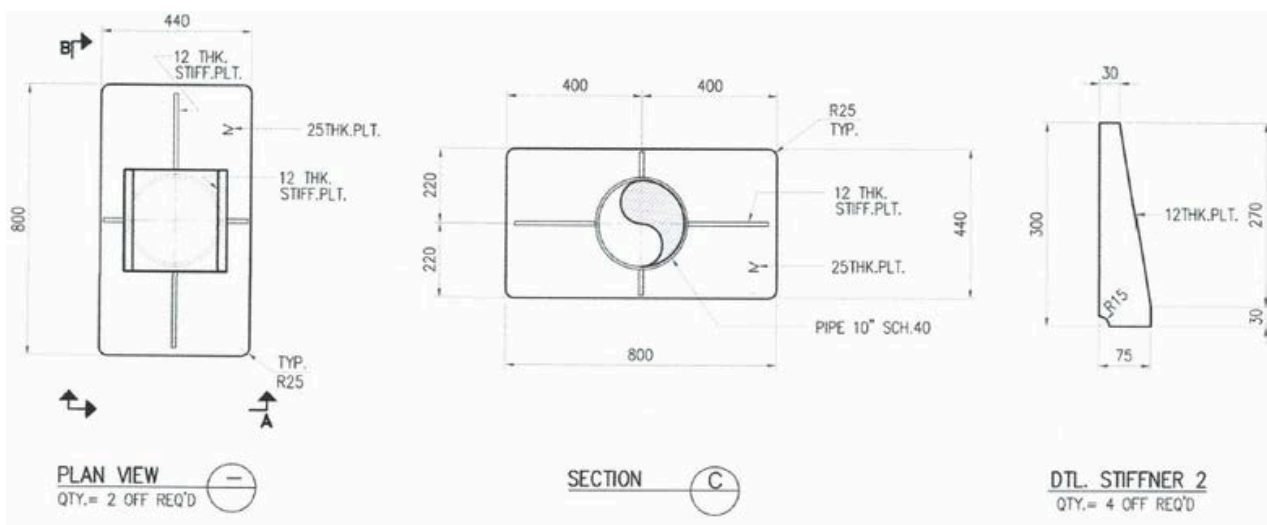
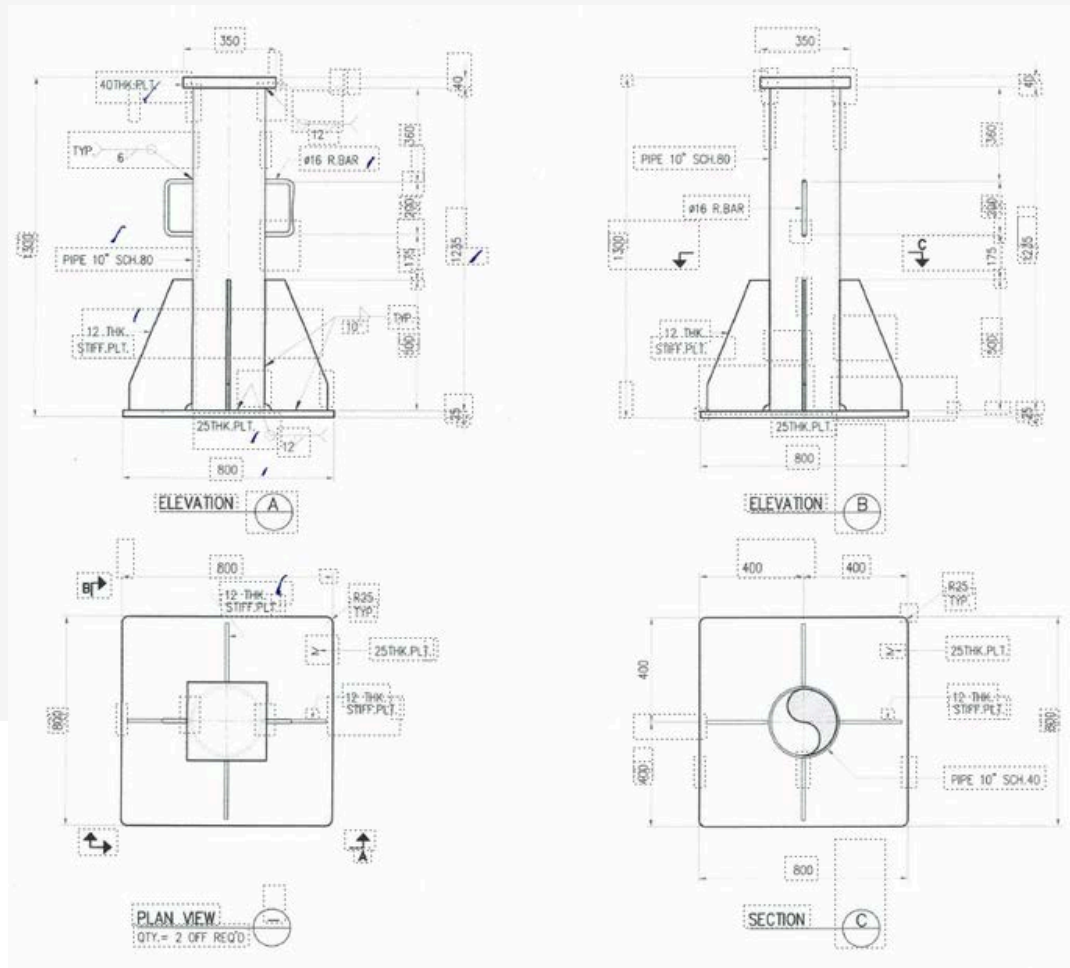


IN-HOUSE DESIGN & FABRICATION

STAND STEEL (SFWL 75-100 tonnage) THRIVENI KPC OPERATIONS



DRAWING

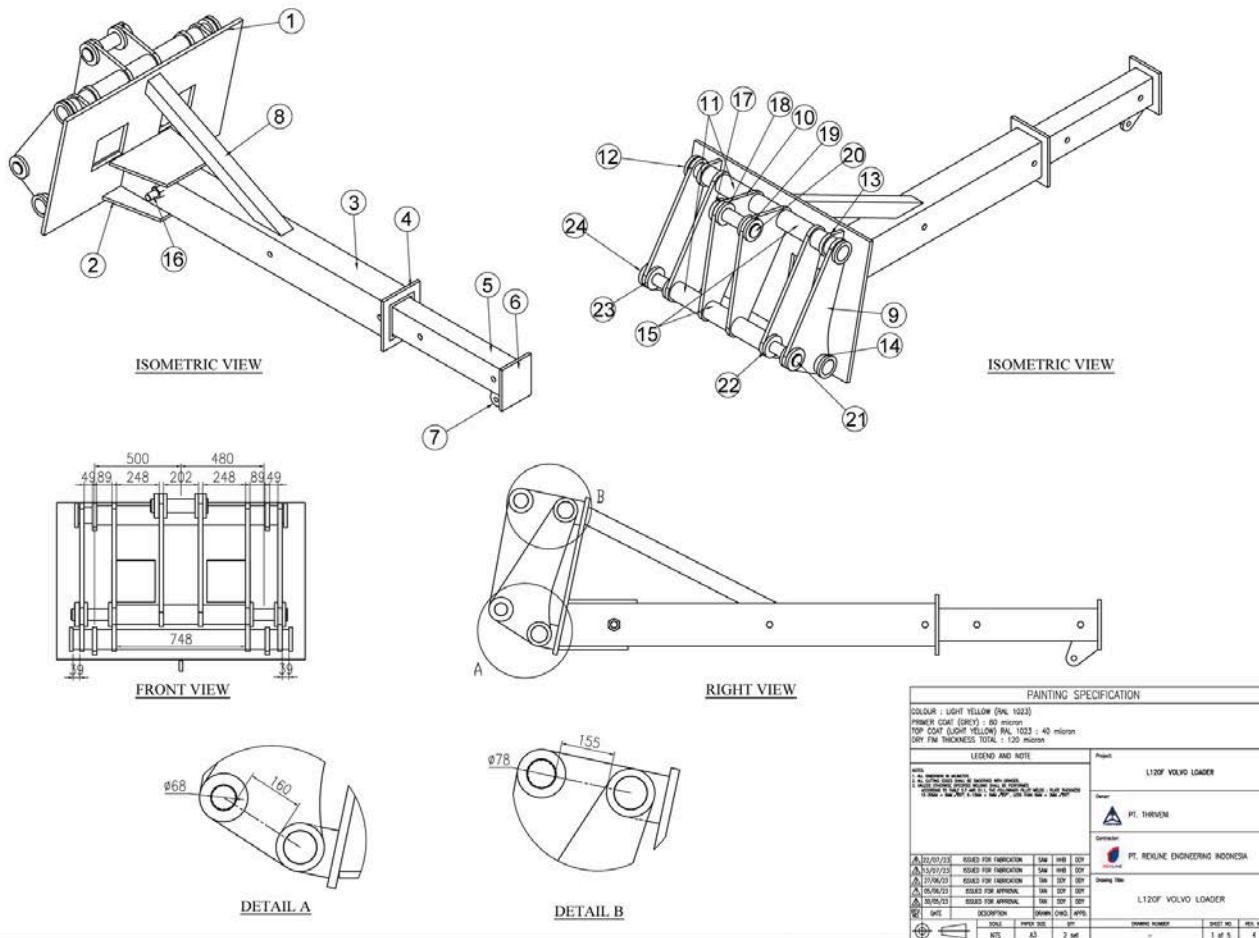


IN-HOUSE DESIGN & FABRICATION

FORKLOADER VOLVO (OEM PARTS) THRIVENI KPC OPERATIONS



DRAWING

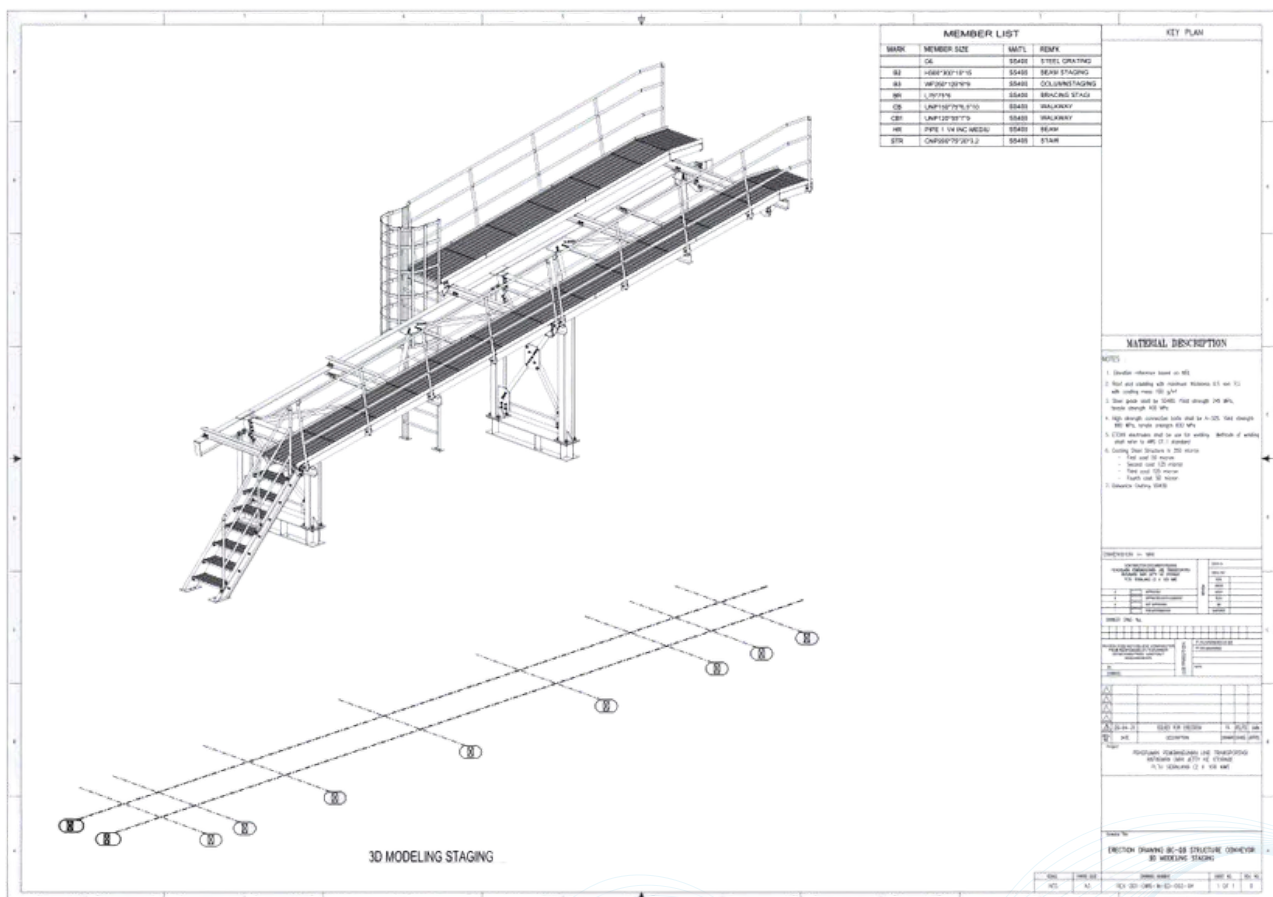


IN-HOUSE DESIGN & FABRICATION

STRUCTURE CONVEYOR (35 SETS DUPAN ANUGRAHA SARASWATY)



DRAWING



IN-HOUSE DESIGN & FABRICATION

FOLDABLE CONTAINER FABRICATION (IMR GREEN)



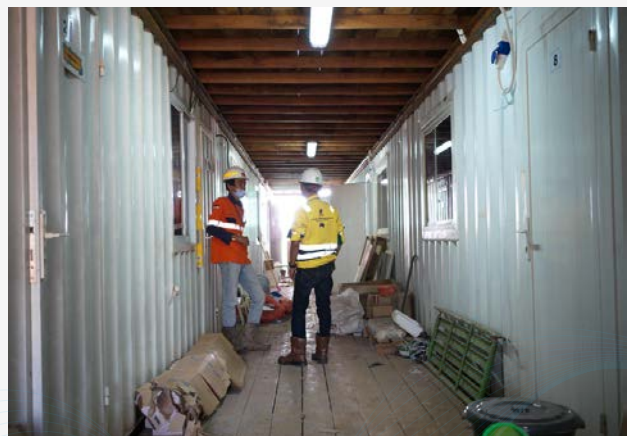
IN-HOUSE DESIGN & FABRICATION

DRAWING



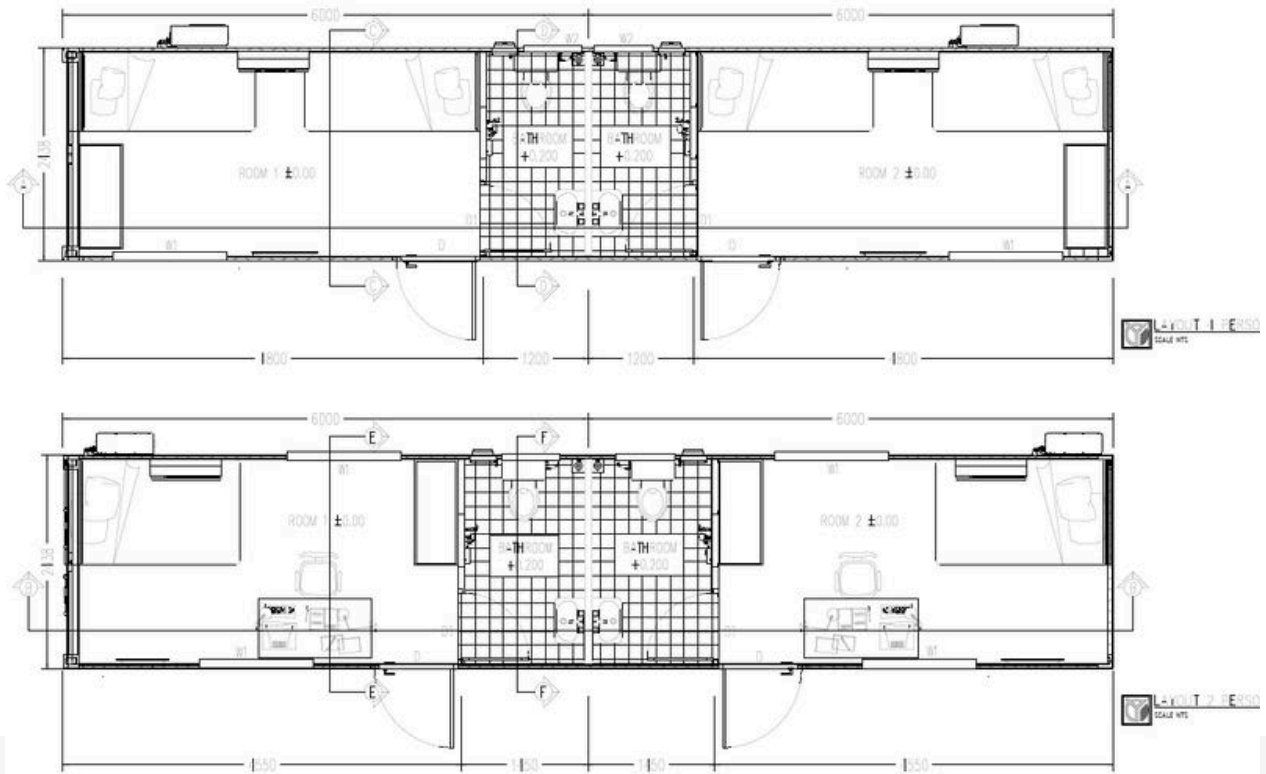
IN-HOUSE DESIGN & FABRICATION

DESIGN & REFABRICATE 40ft CONTAINER OFFICE/CAMP (THRIVENI KPC OPERATIONS)



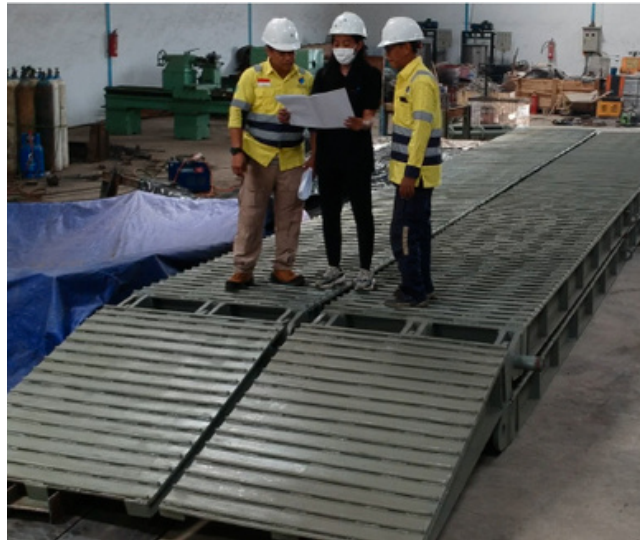
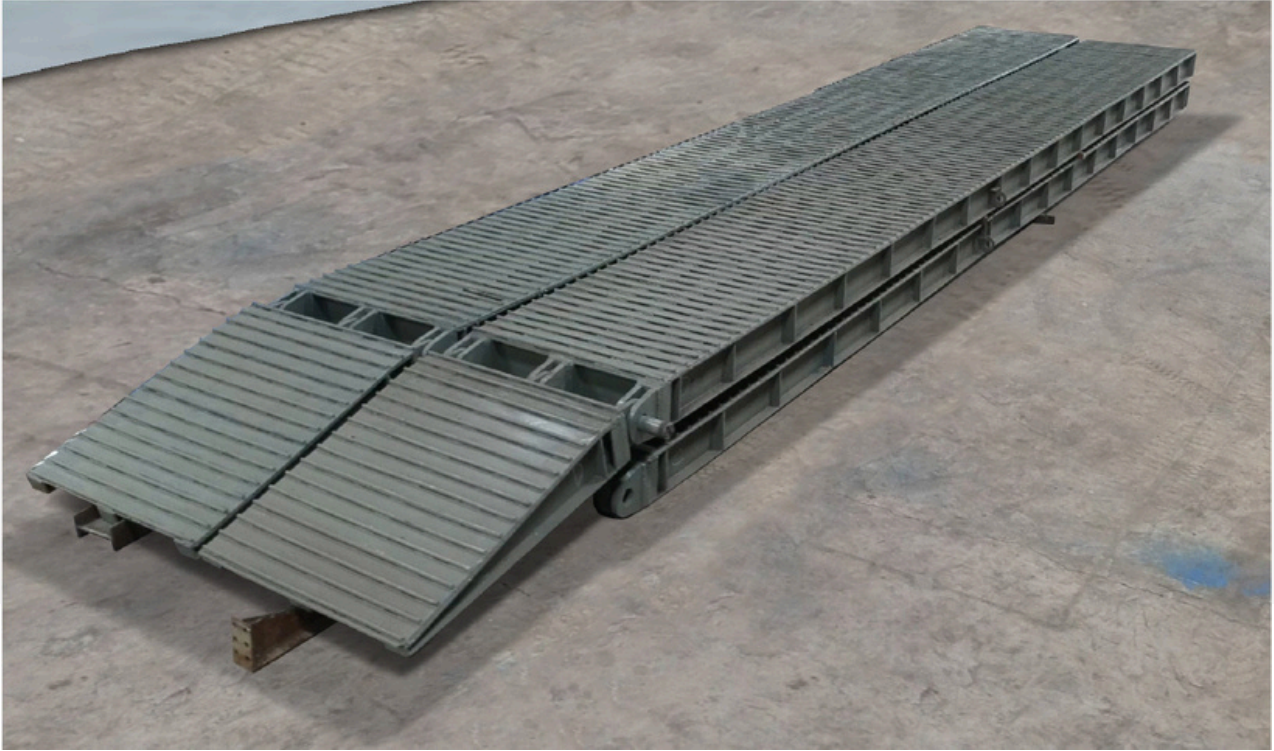
IN-HOUSE DESIGN & FABRICATION

DRAWING

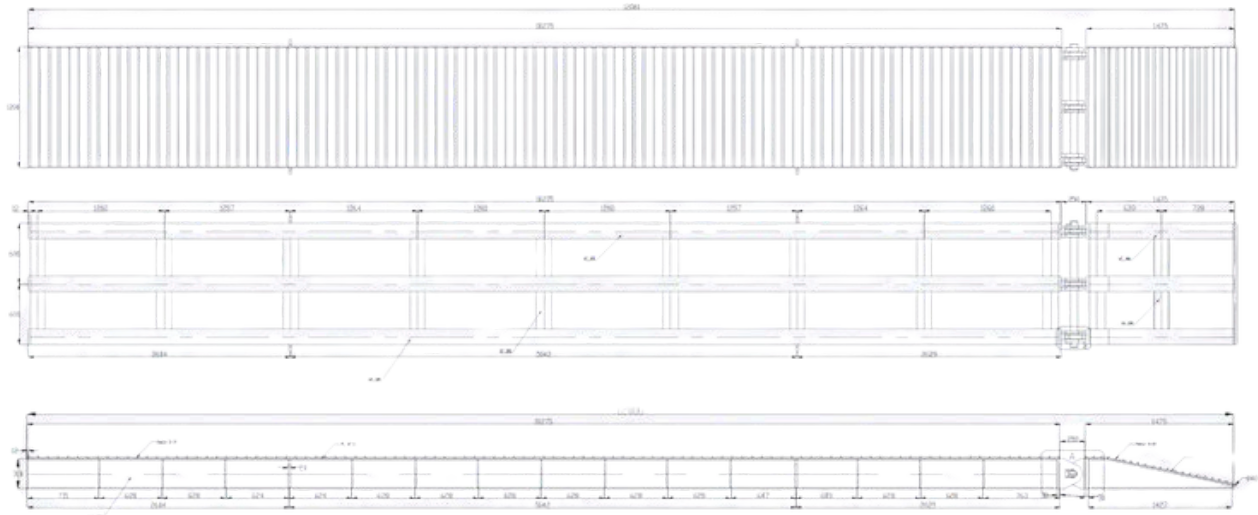


IN-HOUSE DESIGN & FABRICATION

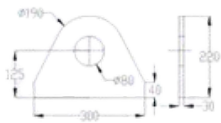
RAMPDOOR 100 TONNE (BAMA SINARMAS MINING)



DRAWING



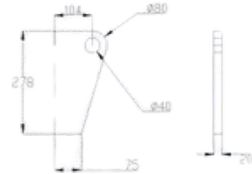
Detail Mounting



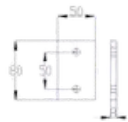
Detail Shaft



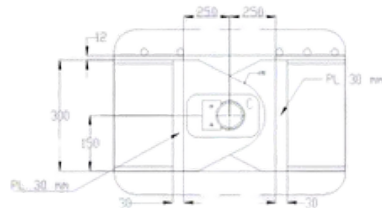
Detail Lifting Lug



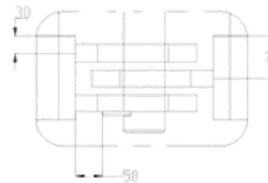
Detail Key



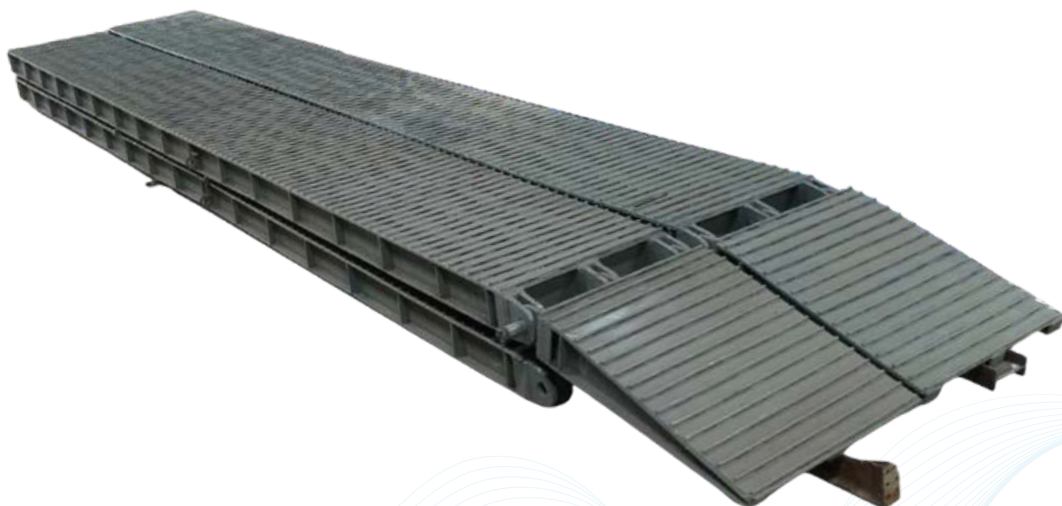
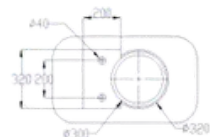
Detail A



Detail B



Detail C

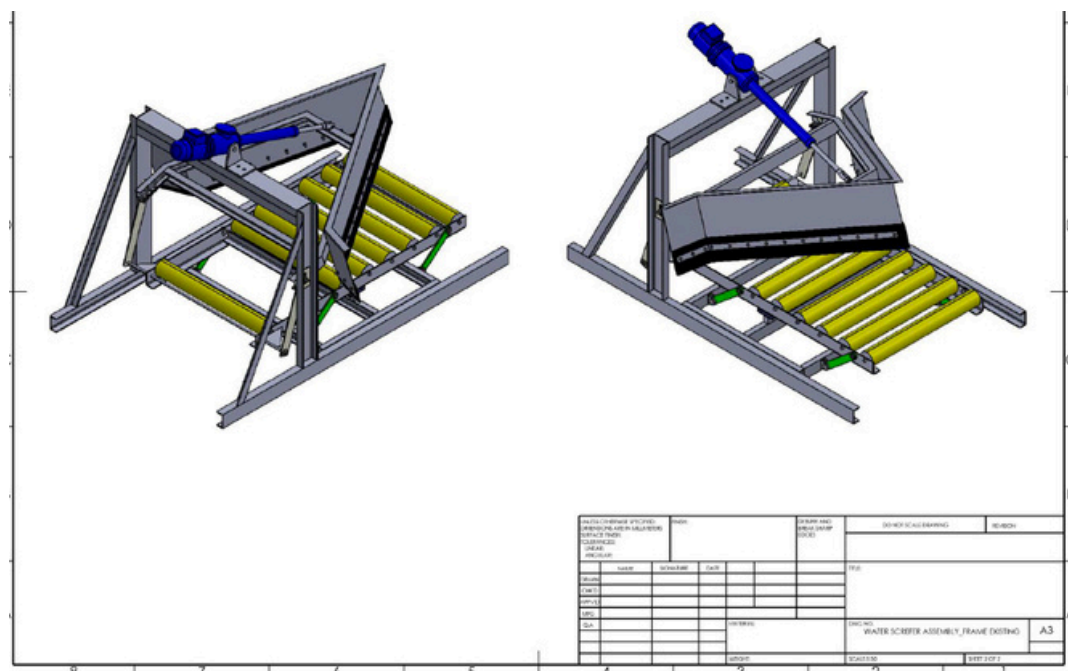


IN-HOUSE DESIGN & FABRICATION

WATER SCRAPPER ASSEMBLY (CIREBON POWER PLANT)



DRAWING



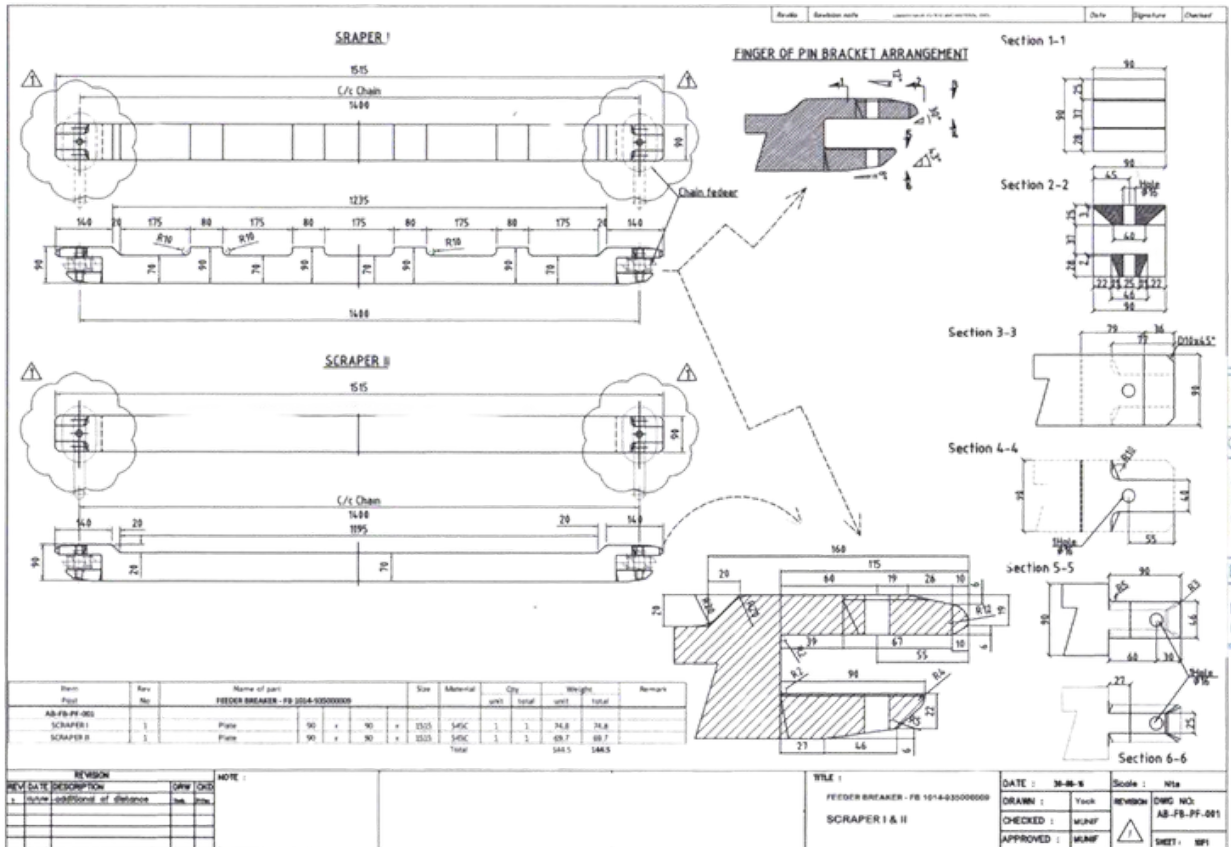
IN-HOUSE DESIGN & FABRICATION

HARDOX & CAST COMB SCRAPER FLIGHT BAR (CIREBON POWER PLANT)



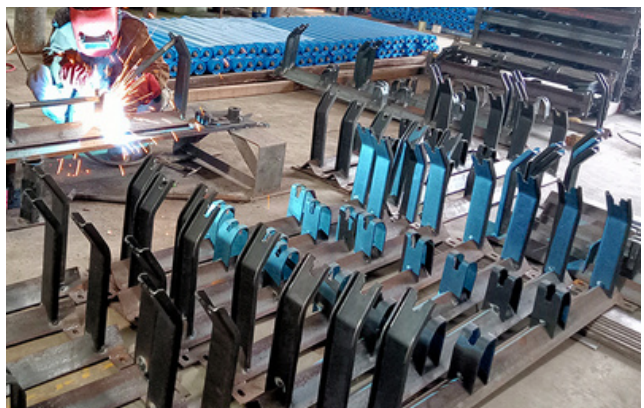
IN-HOUSE DESIGN & FABRICATION

DRAWING



IN-HOUSE DESIGN & FABRICATION

DESIGN & FABRICATION CONVEYOR UPPER STRUCTURE (COKAL)



IN-HOUSE DESIGN & FABRICATION

DESIGN & FABRICATION CONVEYOR UPPER STRUCTURE (COKAL)



IN-HOUSE DESIGN & FABRICATION

DESIGN & FABRICATION CONVEYOR UPPER STRUCTURE (COKAL)



IN-HOUSE DESIGN & FABRICATION

JETTY PILING(COKAL)

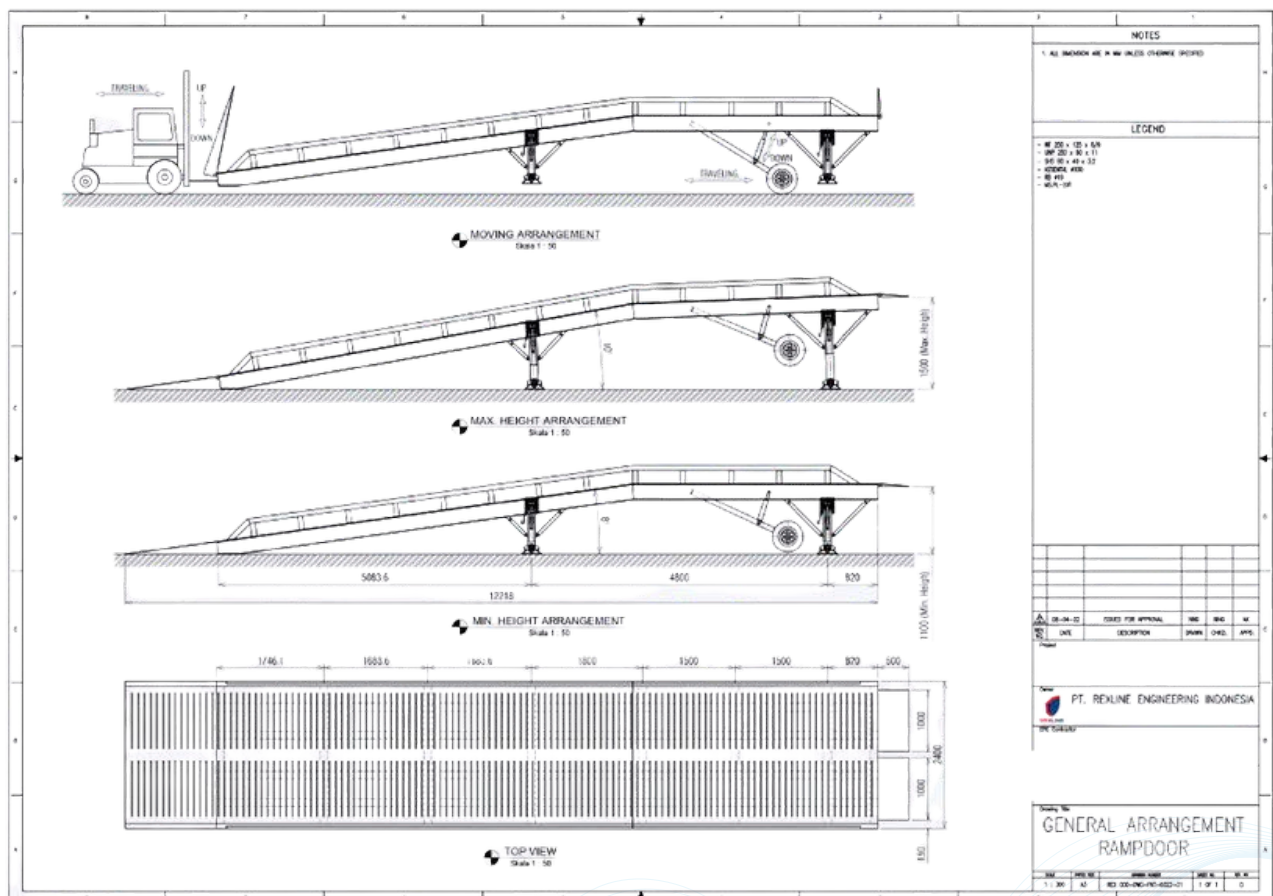


IN-HOUSE DESIGN & FABRICATION

LOADING DOCK

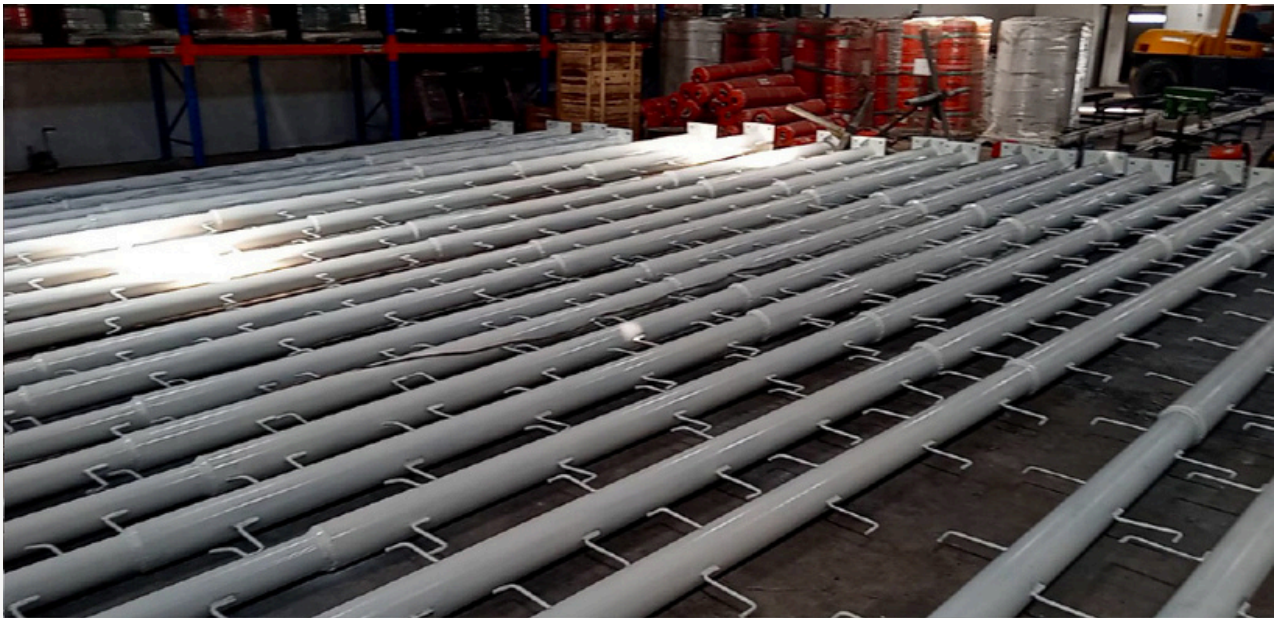


DRAWING



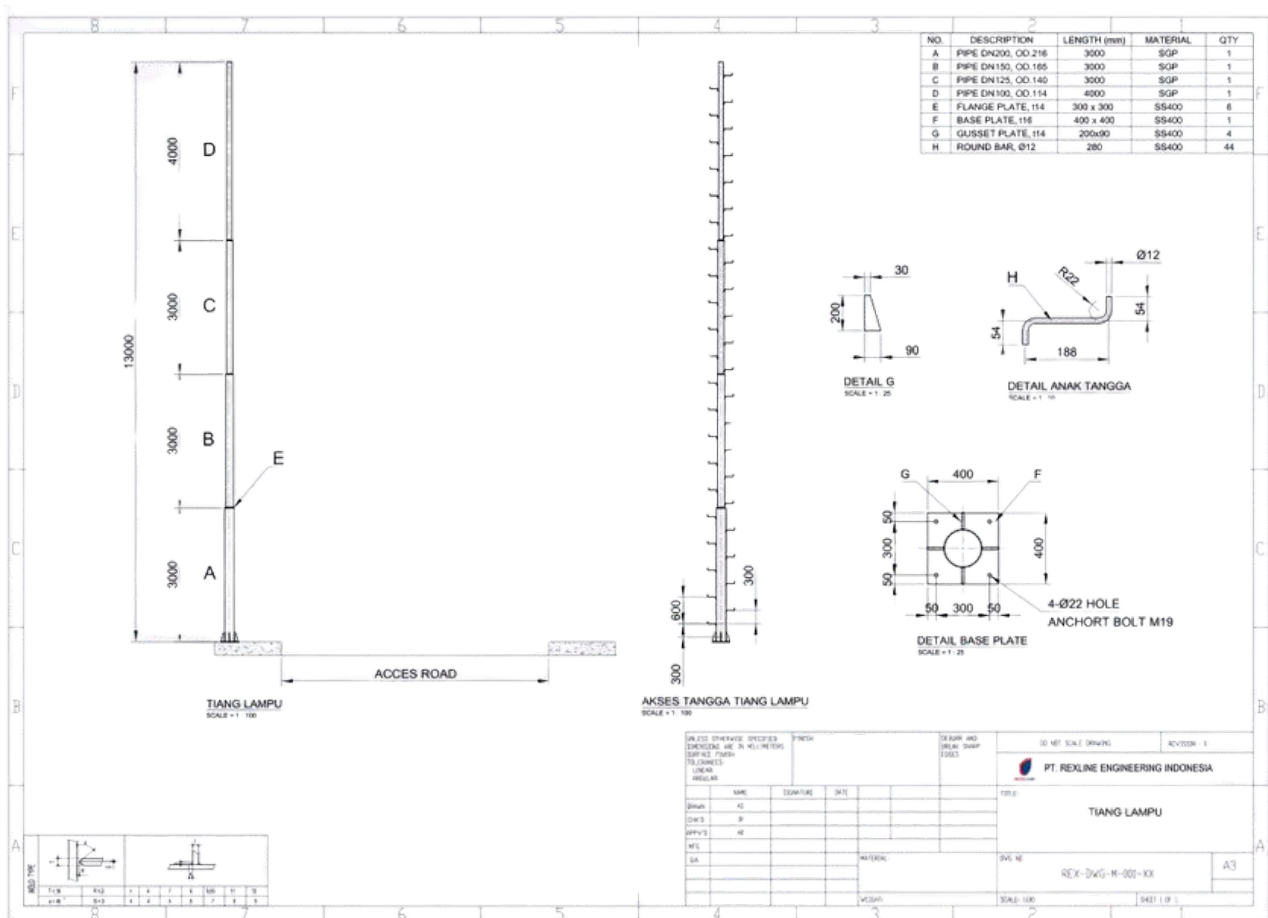
IN-HOUSE DESIGN & FABRICATION

LIGHTING POLE (BAKRIE)



IN-HOUSE DESIGN & FABRICATION

DRAWING



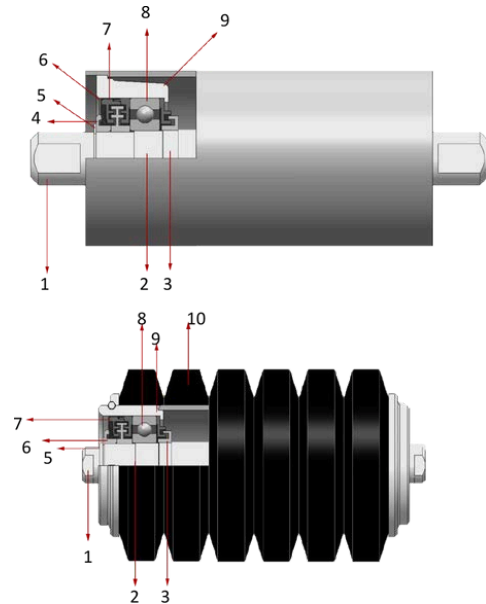
IN-HOUSE DESIGN & FABRICATION

TRIPPER CAR & CONVEYOR SYSTEM

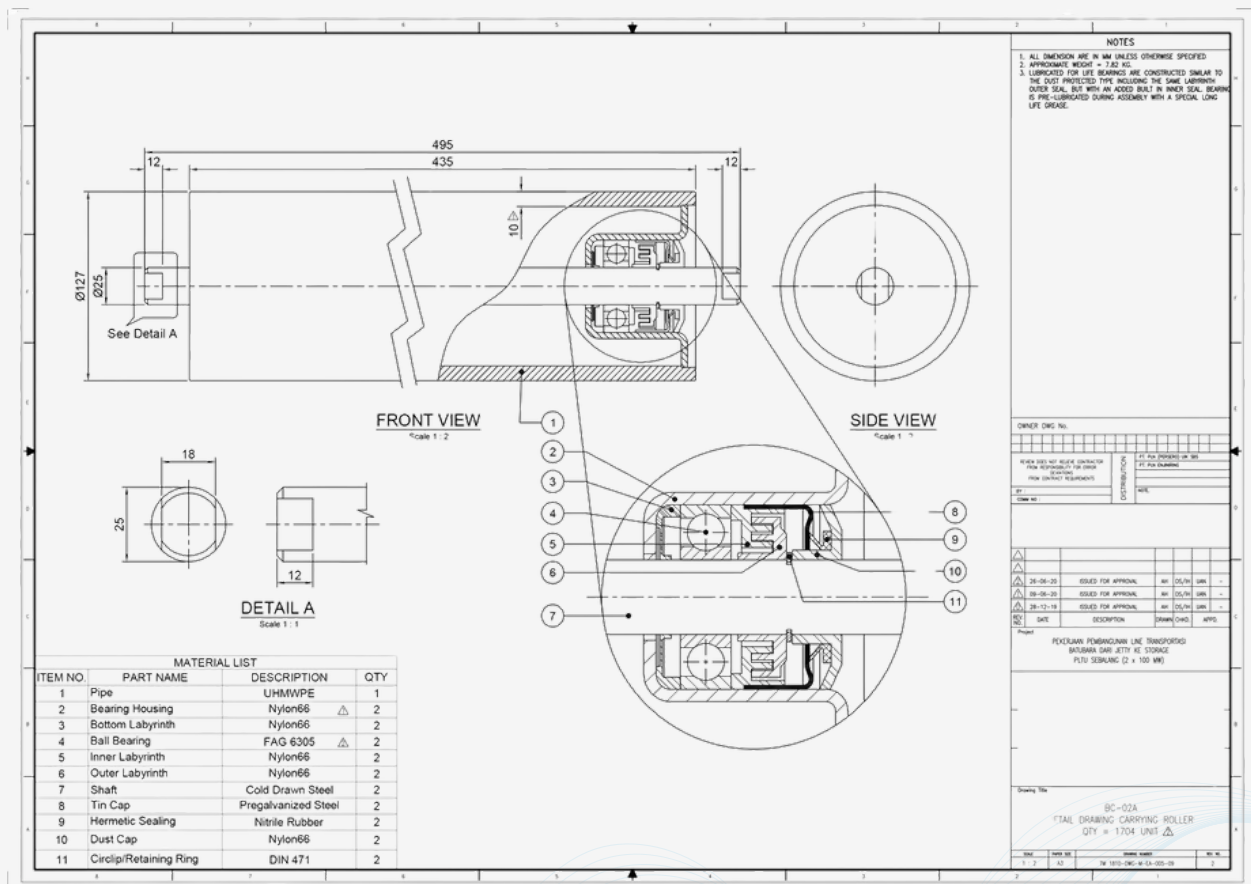


IN-HOUSE DESIGN & FABRICATION

CARRY ROLLER



DRAWING

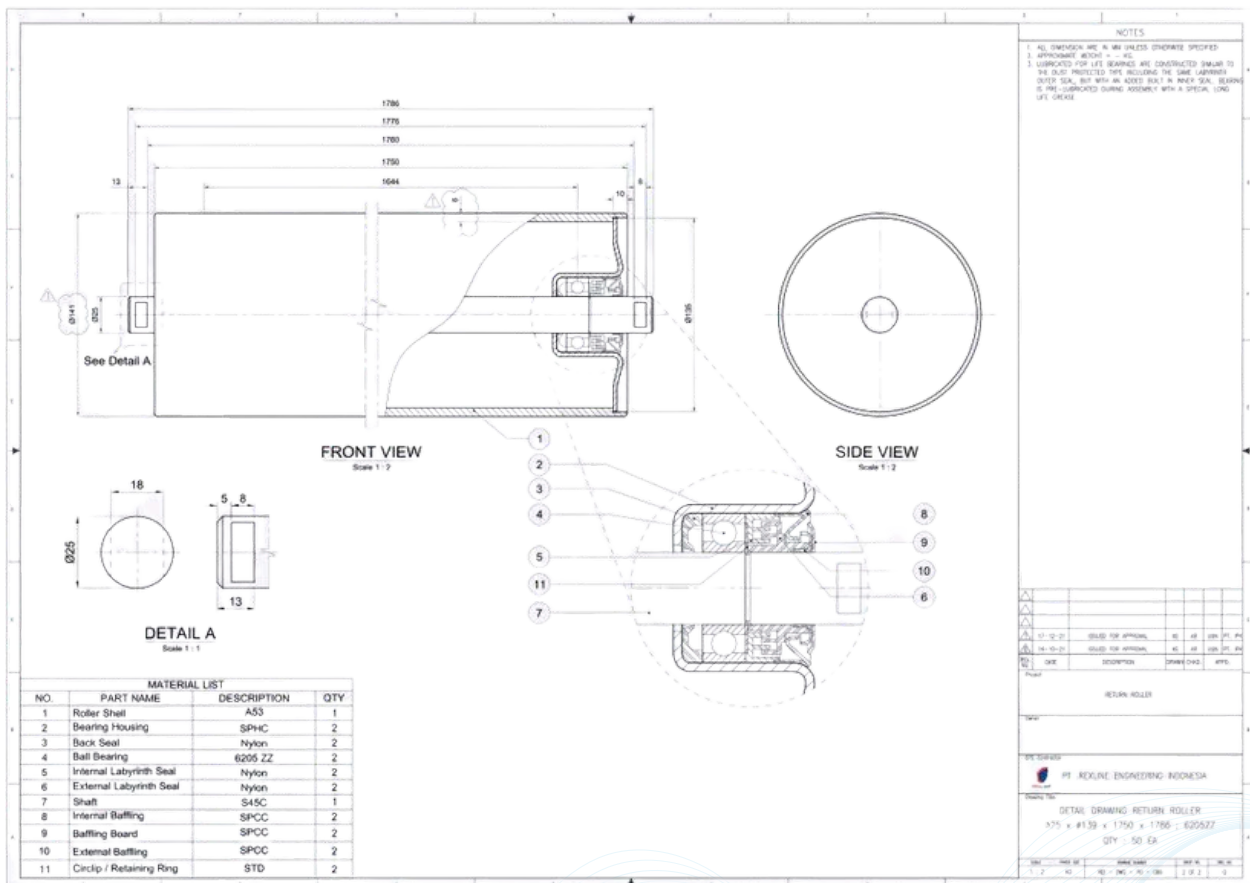


IN-HOUSE DESIGN & FABRICATION

RETURN ROLLER

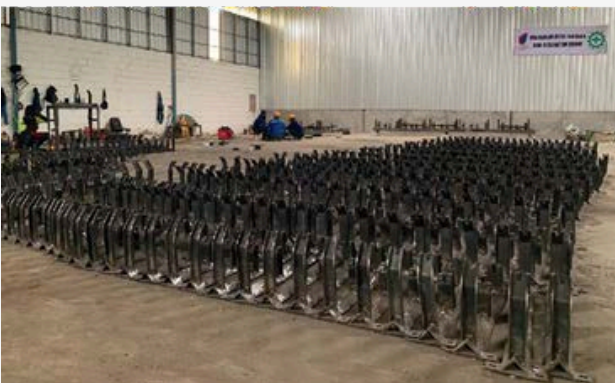
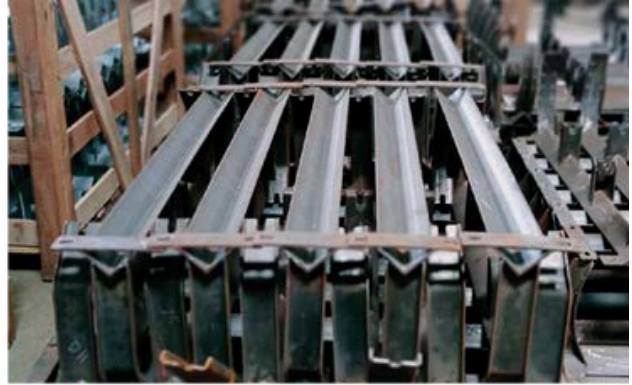


DRAWING

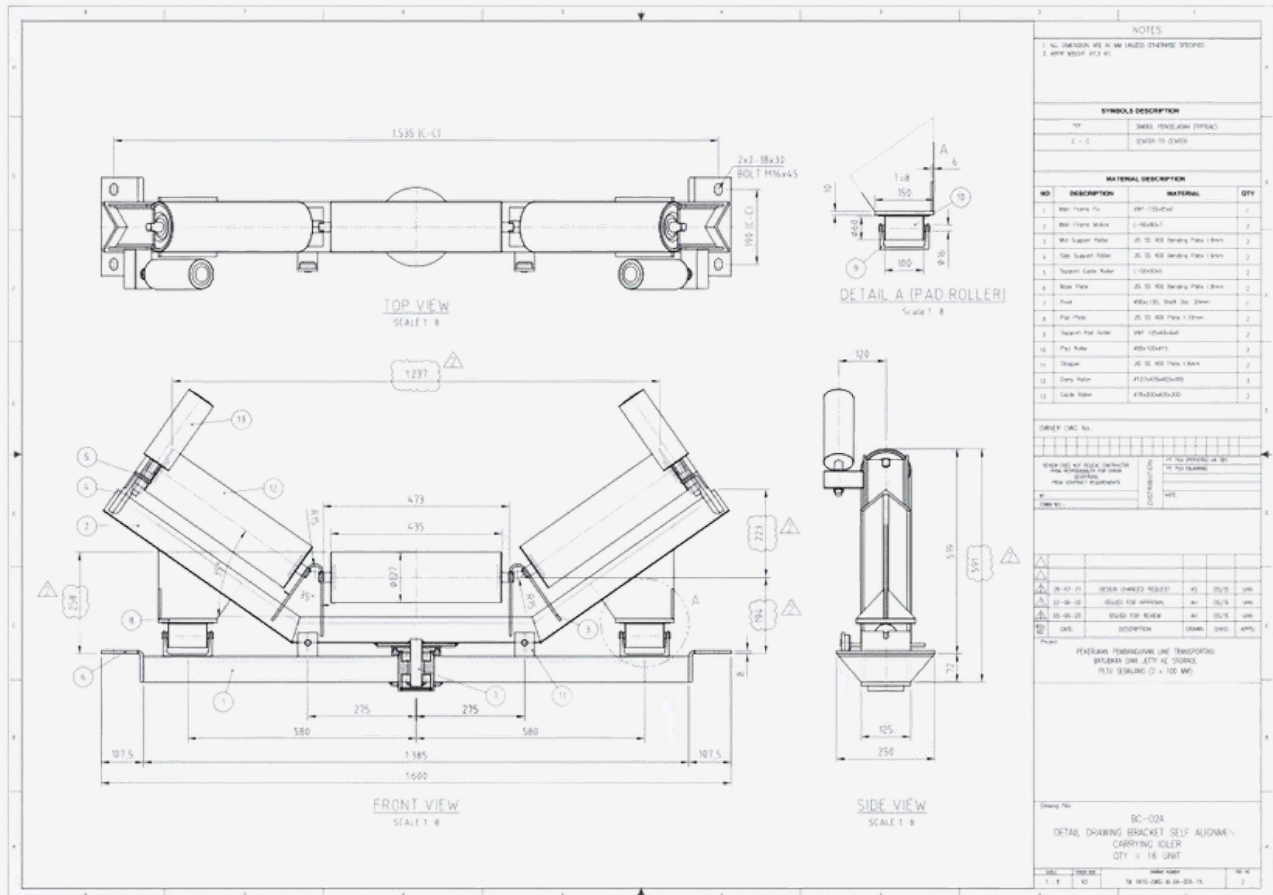


IN-HOUSE DESIGN & FABRICATION

BRACKETS



DRAWING

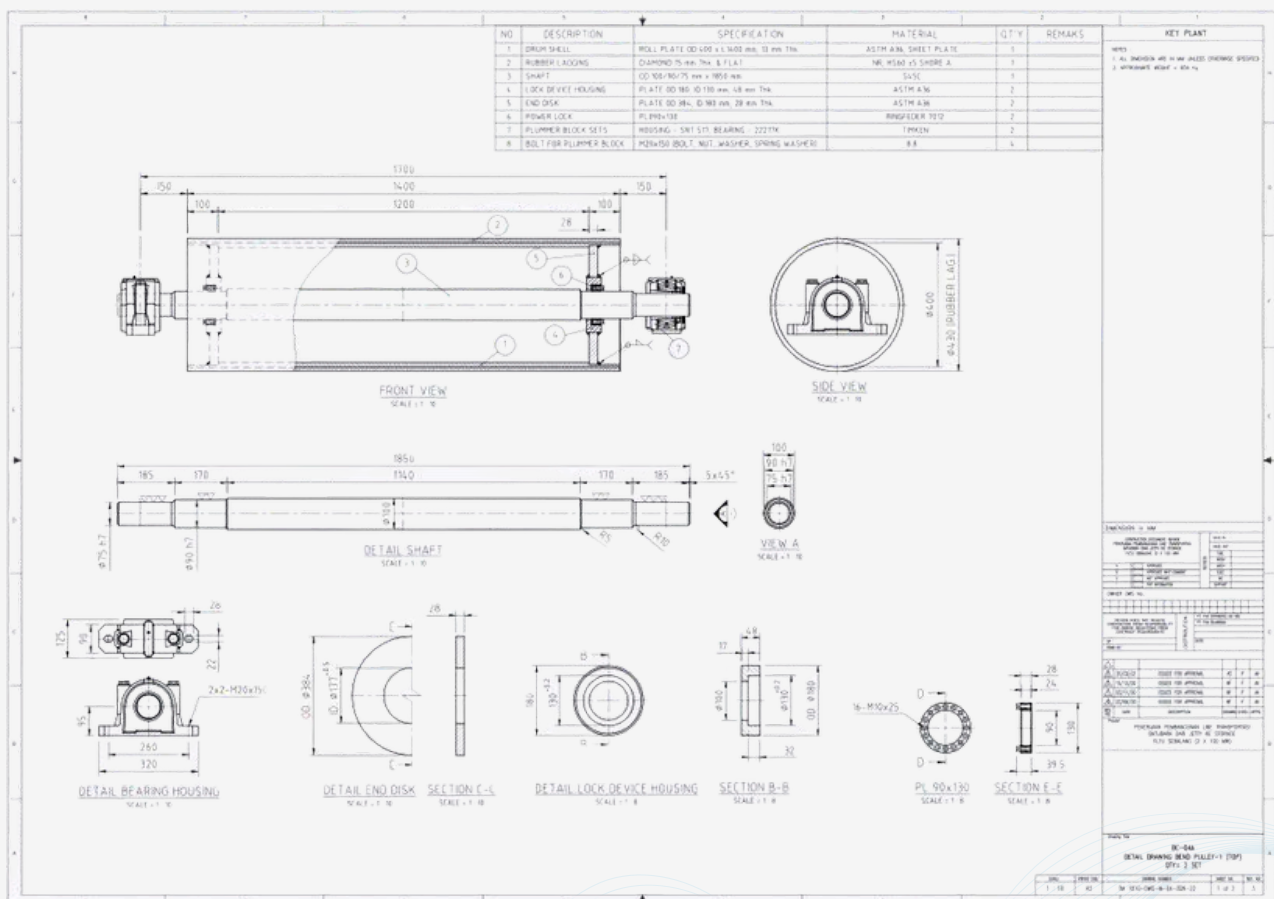


IN-HOUSE DESIGN & FABRICATION

BEND PULLEY



DRAWING



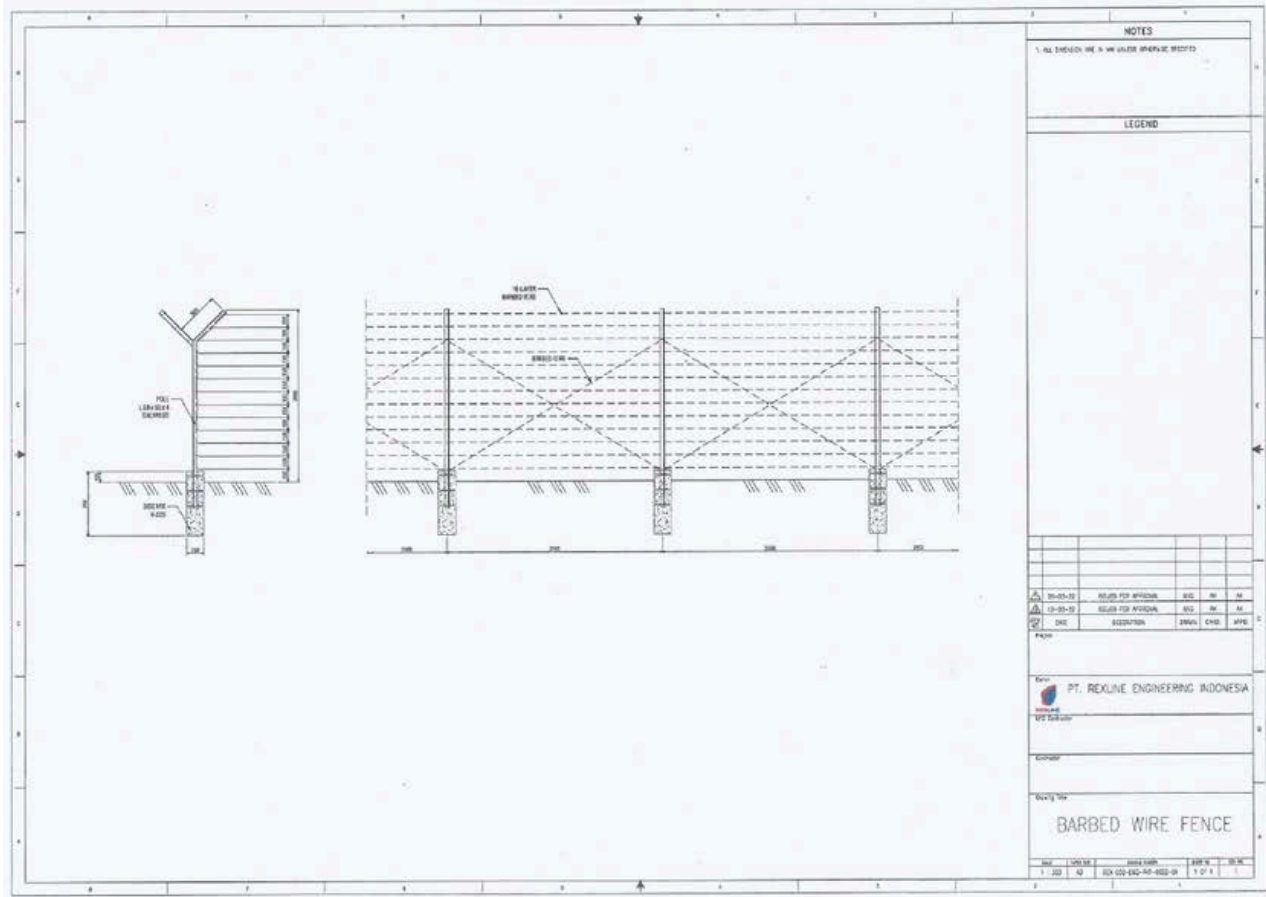
IN-HOUSE DESIGN & FABRICATION

BARBED WIRE FENCE



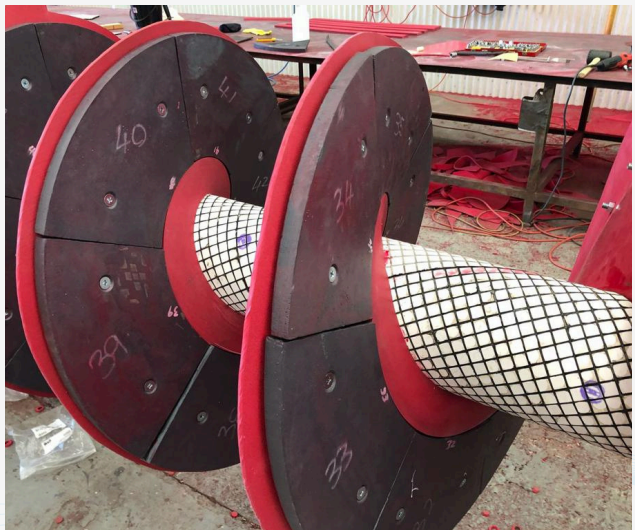
IN-HOUSE DESIGN & FABRICATION

DRAWING



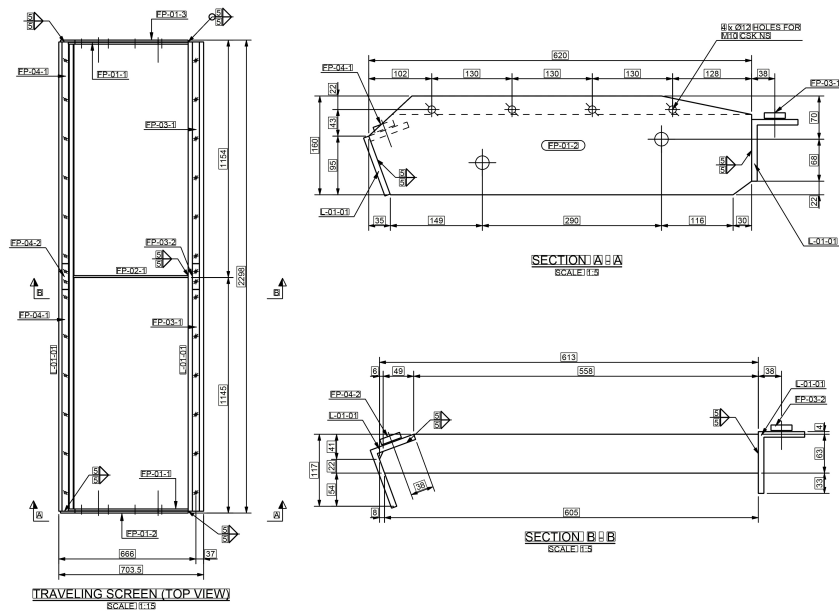
IN-HOUSE DESIGN & FABRICATION

SCREW FEEDER NICKEL MINING & OPERATIONS



IN-HOUSE DESIGN & FABRICATION

SCREEN FOR DUAL FLOW BEND (PLN JEPARA)



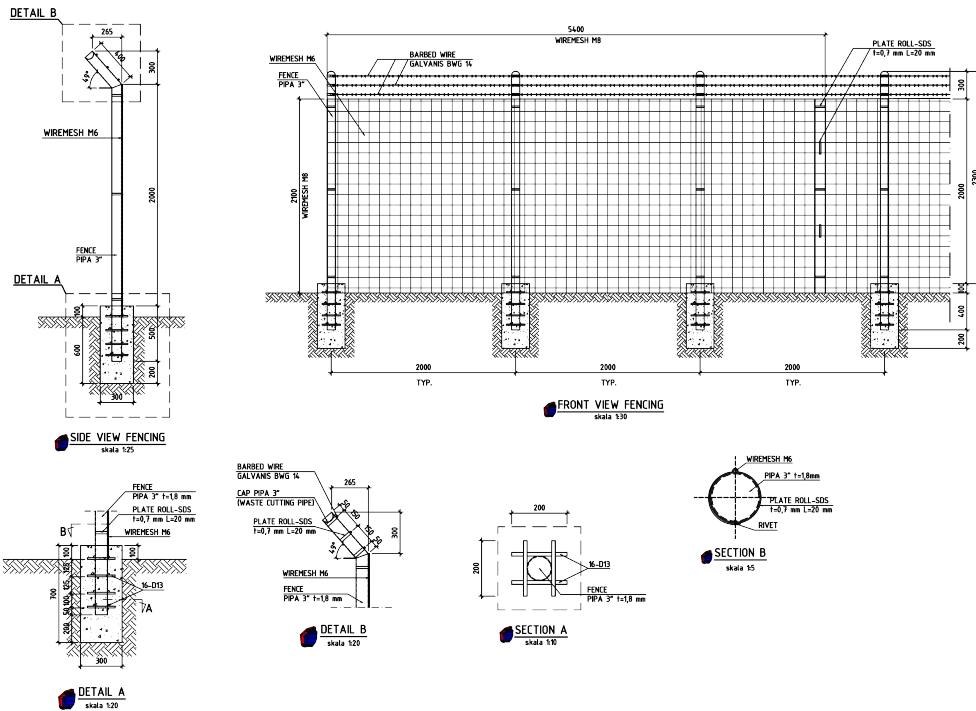
IN-HOUSE DESIGN & FABRICATION

CPO Tank Designing, Fabrication &
Commissioning 5876 m³
Location : Sulawesi



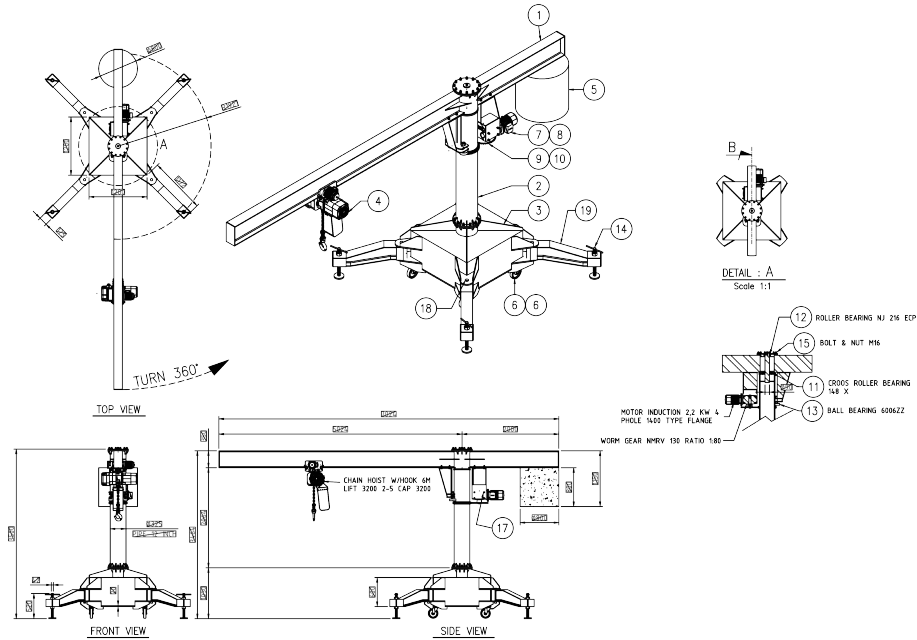
IN-HOUSE DESIGN & FABRICATION

FENCING



IN-HOUSE DESIGN & FABRICATION

JIB CRANE





THANK YOU

REXLINE ENGINEERING

CONTACT US :



Call

+62 811 1910 3695



Mail

salesteam@rexlineengineering.com



Web Address

www.rexlineengineering.com



Address (Head Office)

Jl. Raya Kupang Baru No.74, Sonokwijenan, Kecamatan Sukomanunggal, Surabaya, Jawa Timur 60189



Heavy Fabrication

K M10 Jalan Raya Mantub, Takeranklanting, Kec. Tikung, Lamongan, Jawa Timur 62280