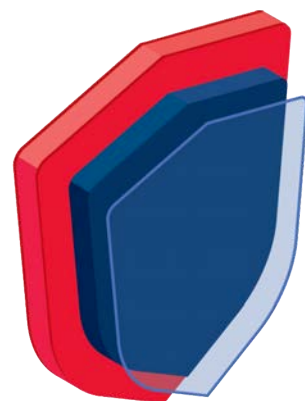




REXLINE ENGINEERING INDONESIA

FABRICATION CATALOGUE



REXLINE
ENGINEERING

EPCMIM

Engineering Procurement Construction Management & In-house Manufacturing

Head Office

Jl. Raya Kupang Baru No.74, Sonokwijenan, Kec.
Sukomanunggal, Surabaya, Jawa Timur 60189, Indonesia

salesteam@rexlineengineering.com
+62 811 1910 3695 or +62 811 1910 3700

Heavy Fabrication

KM10 Jalan Raya Mantub, Dsn.Takeranklating
Takeranklating, Kec. Tikung, Lamongan Jawa Timur
62280

INTRODUCTION

ABOUT OUR COMPANY

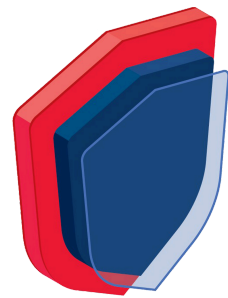
ABOUT US

Rexline Engineering Indonesia, a member of an Australian group of companies, stands out as a prominent EPCM contractor and fabricator serving the mining, power plant, and chemical processing industries. The company boasts a full suite of in-house capabilities, including design, mechanical, electrical, and civil engineering expertise, complemented by an internal fabrication and installation team. This integrated approach allows Rexline to offer comprehensive solutions tailored to the unique needs of clients in these critical sectors.

We can help you with many facets of engineering in your business. With the tight network of specialized engineering and procurement partners to keep only the best involved with their project and keeping costs down to help with project advancement.

Rexline Engineering Indonesia has established a strong reputation for providing heavy fabrication work to some of the largest mines globally. Operating from their Indonesian factory, the company specializes in manufacturing and replacing OEM equipment for end users in the mining industry. With a comprehensive range of capabilities, Rexline offers design, manufacturing, and commissioning services tailored to meet the specific requirements of their clients.

This level of expertise positions Rexline as a valuable partner for mining operations seeking reliable and customized equipment solutions.



REXLINE
ENGINEERING

REXLINE ENGINEERING INDONESIA'S CAPABILITIES ARE:

- Mechanical and Structural Engineering
- Electrical and Control Engineering
- Port Civil Engineering, Shipping Logistics
- Project Feasibility Design & Estimate
- Capital Cost Equipment & System
- Engineering & Estimates
- Site Systems Audit & Evaluation
- Existing Plant Equipment
- Full Individual Equipment & System Design
- Bid Evaluation of Proposed Material
- Handling Equipment Purchases
- Structural and Mechanical Cad Detailing
- Dem Material Flow Analysis and Transfer Chute
- Design
- 3D Modeling for Design & Proposal Presentation
- On Site Supervision and Construction Assistance.

INDEX

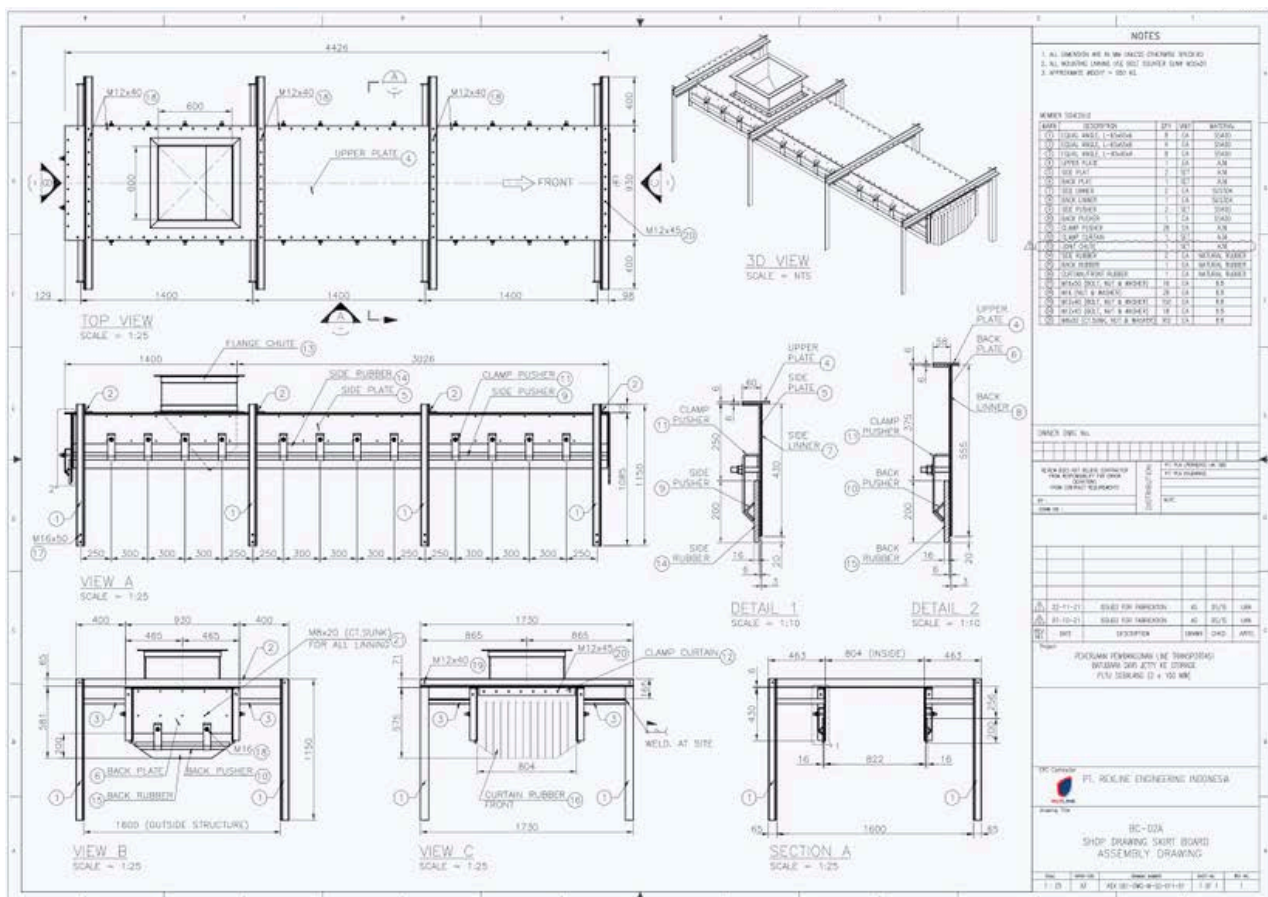
IN-HOUSE DESIGN & FABRICATION

- Introduction About Our Company	2
- Skirt Board System	4
- Structure Conveyor	5
- Ramp Door	6-7
- Tripper Car and Mobile Conveyor System	8
- Loading Dock	9
- Lighting Pole	10-11
- Fertilizer Process Heavy Equipment	12-13
- Scraper Flight Bar	14-15
- Water Scraper Assembly	16
- Forkloader Volvo	17-18
- Conveyor Upper Structure	19-21
- Design & Build Container 40ft Office/Mining Camp	22-23
- Design & Build Foldable Container Camp	24-25
- Carry Roller	26
- Return Roller	27
- Bracket	28-29
- Tail Pulley	30
- Snub Pulley	31
- Bend Pulley	32
- Barbed Wire Fence	33-34
- Jetty Piling	35
- Stand Steel	36
- Degreasing Machine	37-38
- Screw Feeder Nickel Mining & Operations	39
- Gantry	40
- Chutes	41
- Contact Us	42

SKIRT BOARD SYSTEM



DRAWING

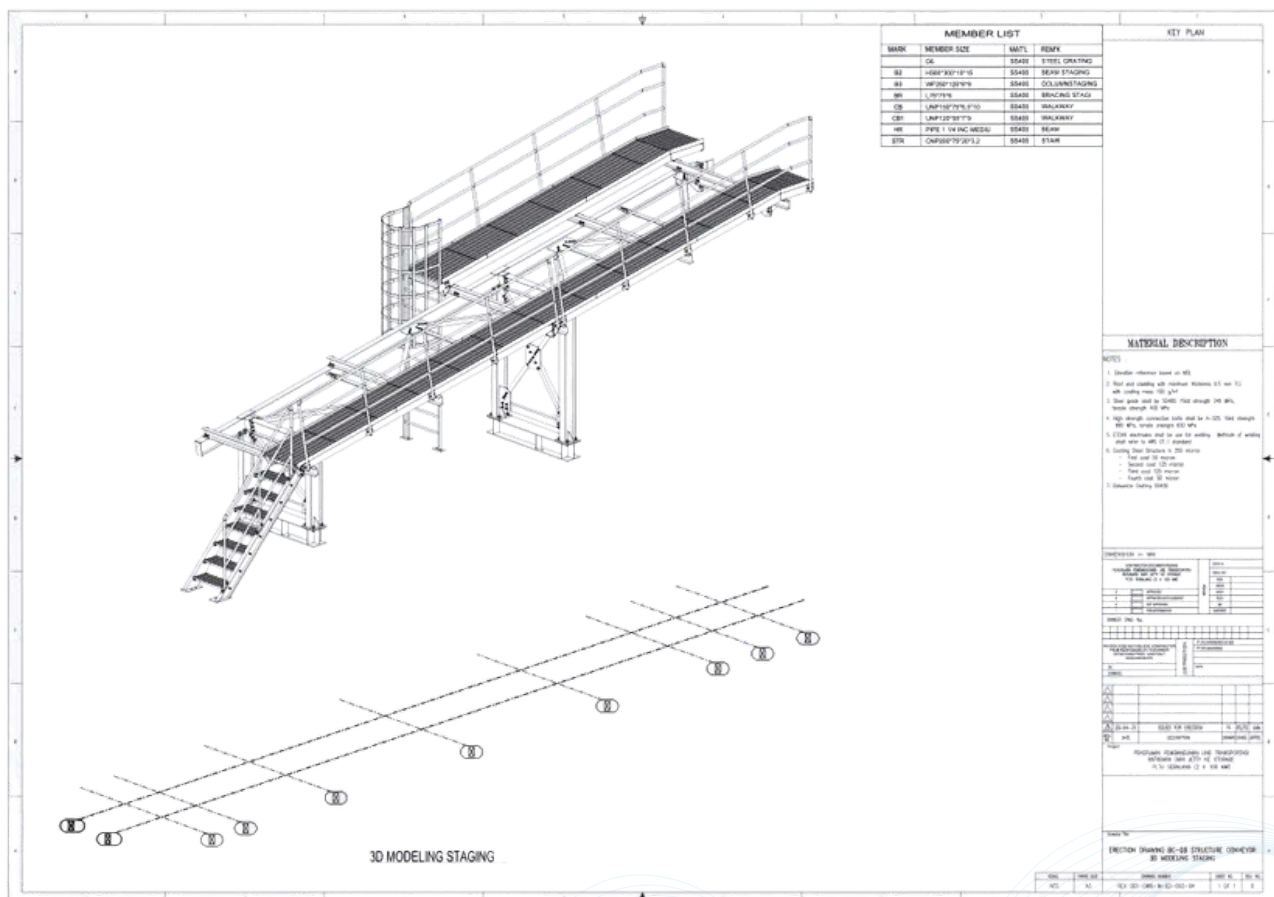


IN-HOUSE DESIGN & FABRICATION

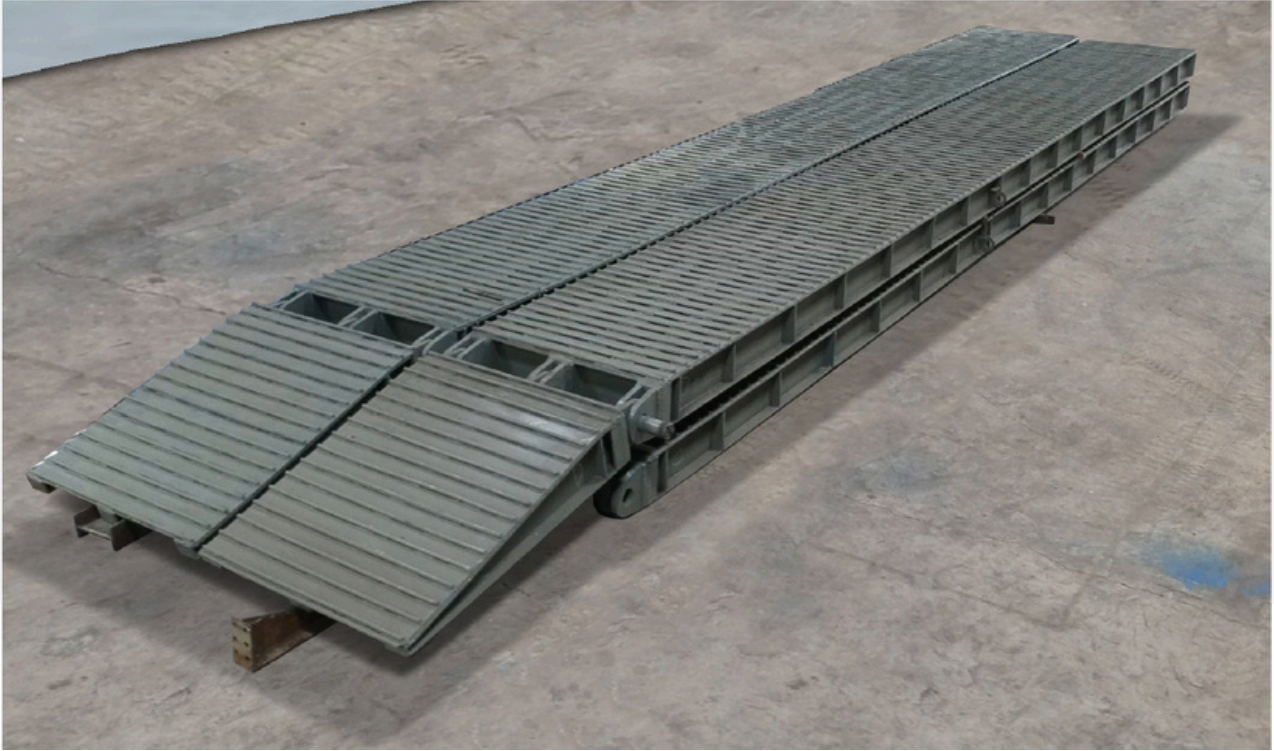
STRUCTURE CONVEYOR



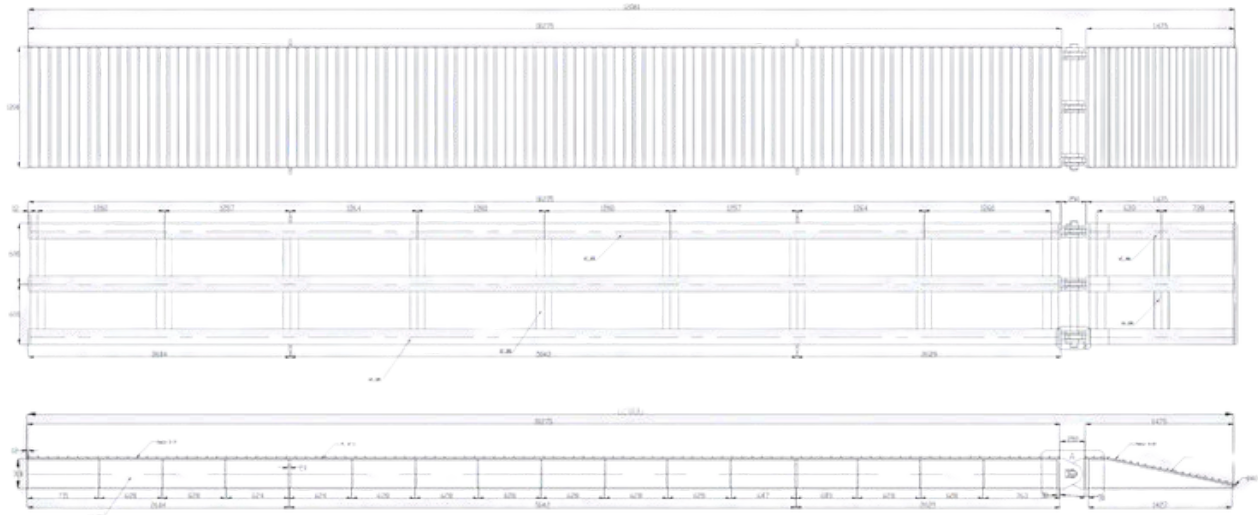
DRAWING



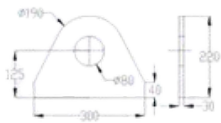
RAMPDOOR



DRAWING



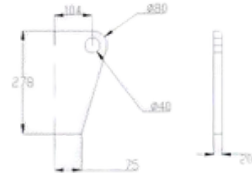
Detail Mounting



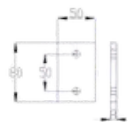
Detail Shaft



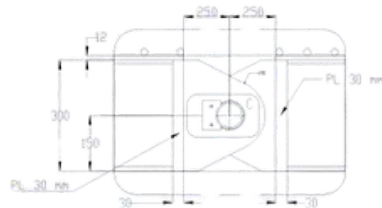
Detail Lifting Lug



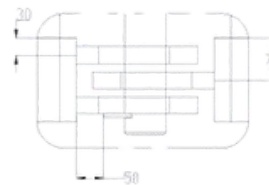
Detail Key



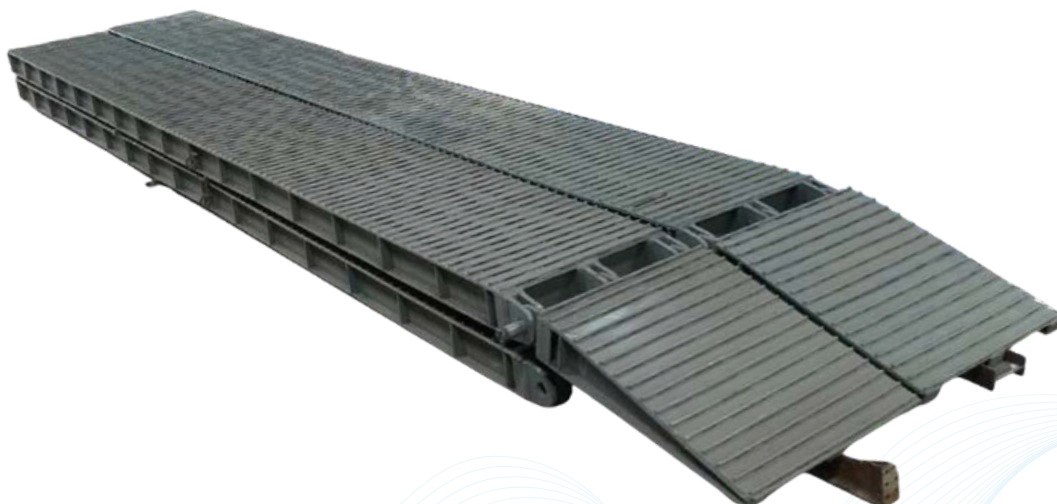
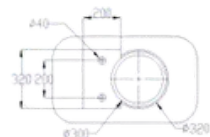
Detail A



Detail B



Detail C



IN-HOUSE DESIGN & FABRICATION

TRIPPER CAR & CONVEYOR SYSTEM

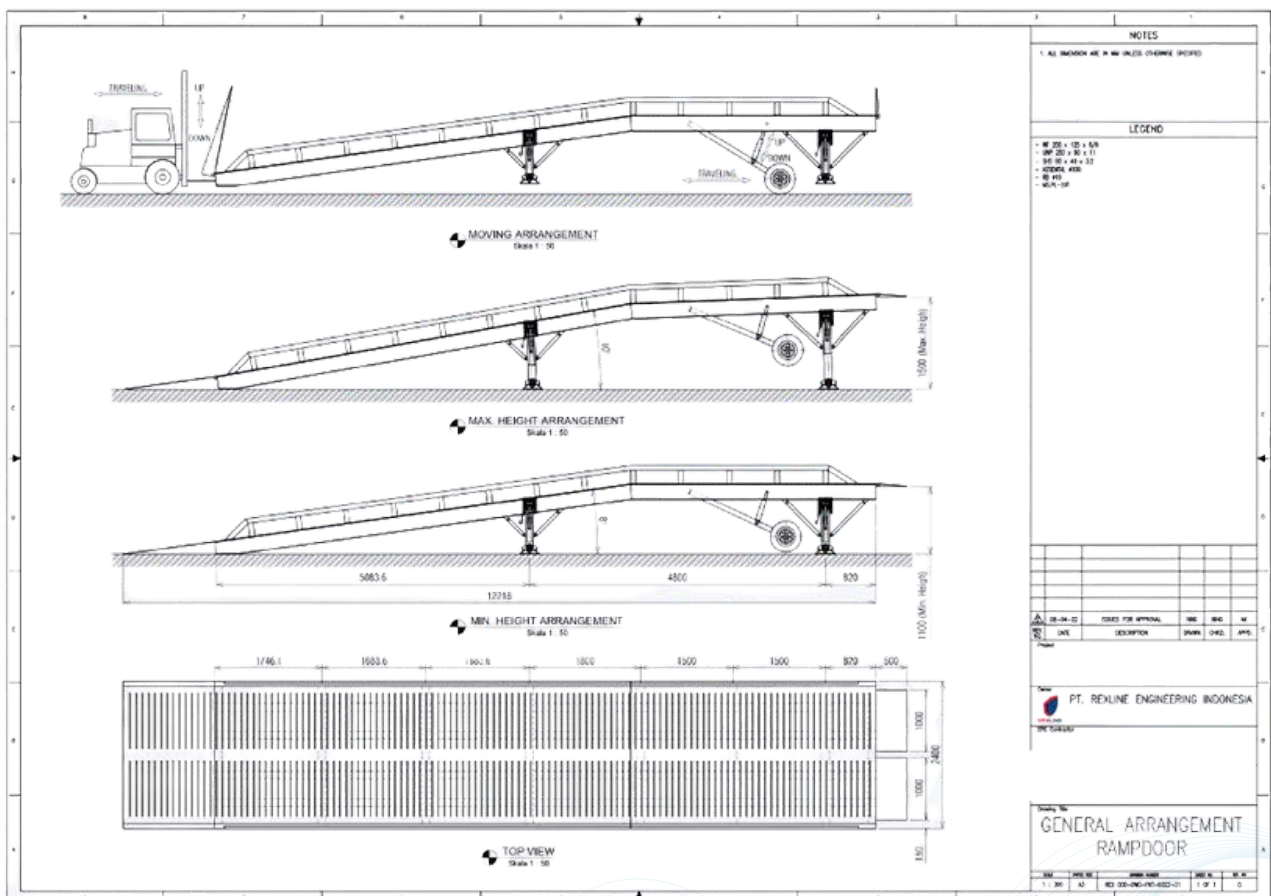


IN-HOUSE DESIGN & FABRICATION

LOADING DOCK

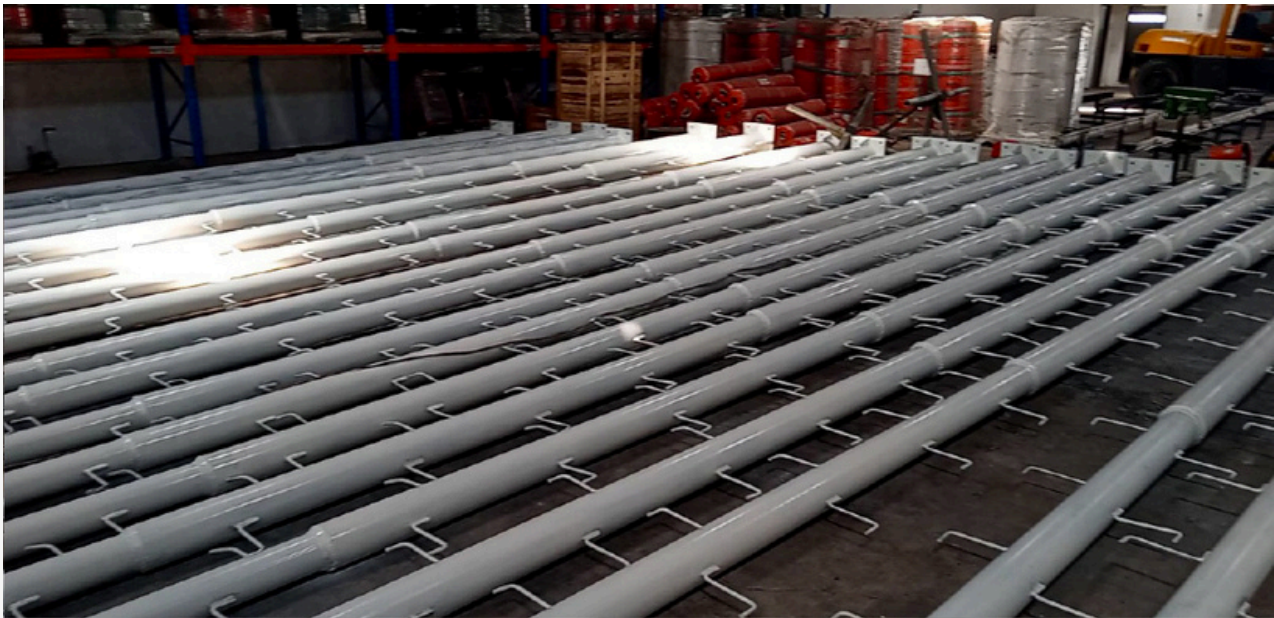


DRAWING

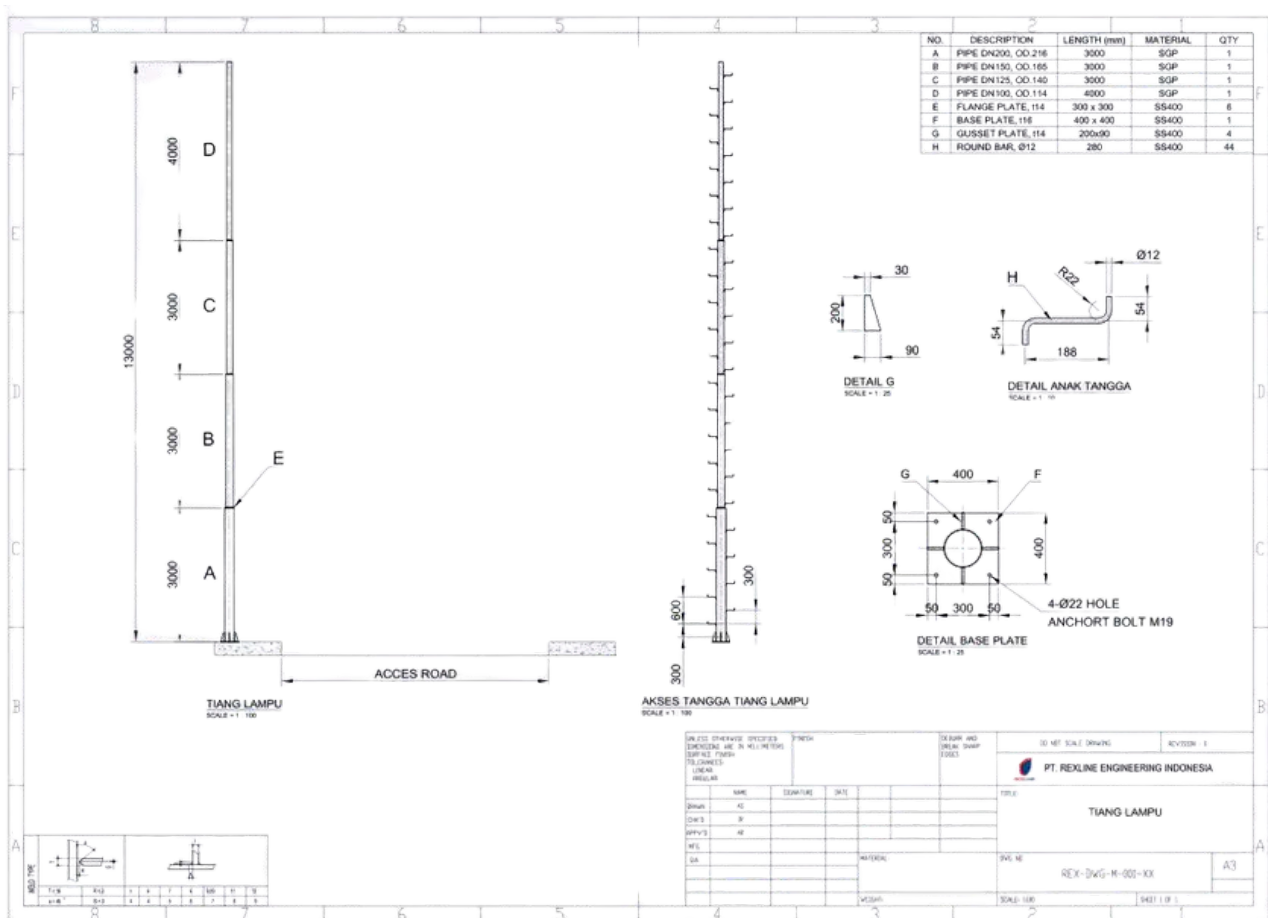


IN-HOUSE DESIGN & FABRICATION

LIGHTING POLE

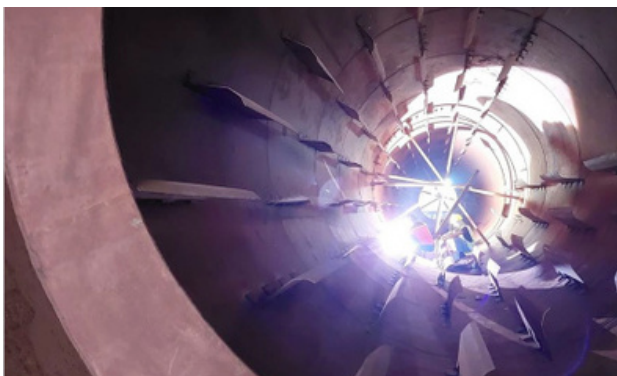
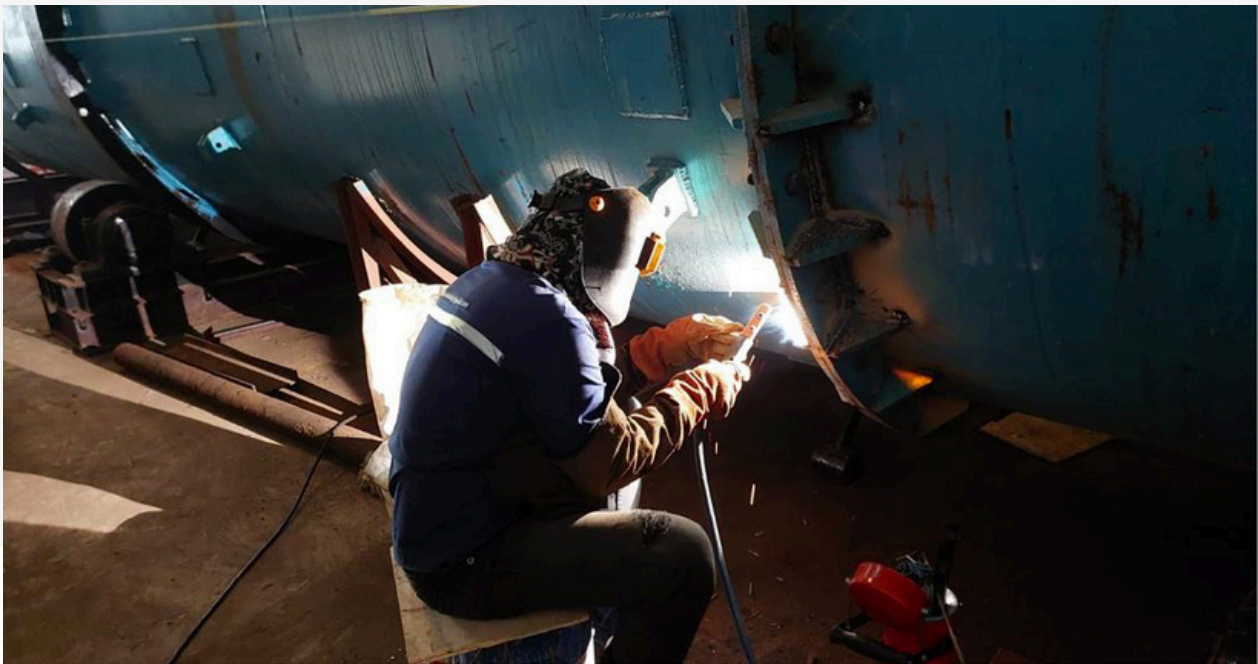


DRAWING



IN-HOUSE DESIGN & FABRICATION

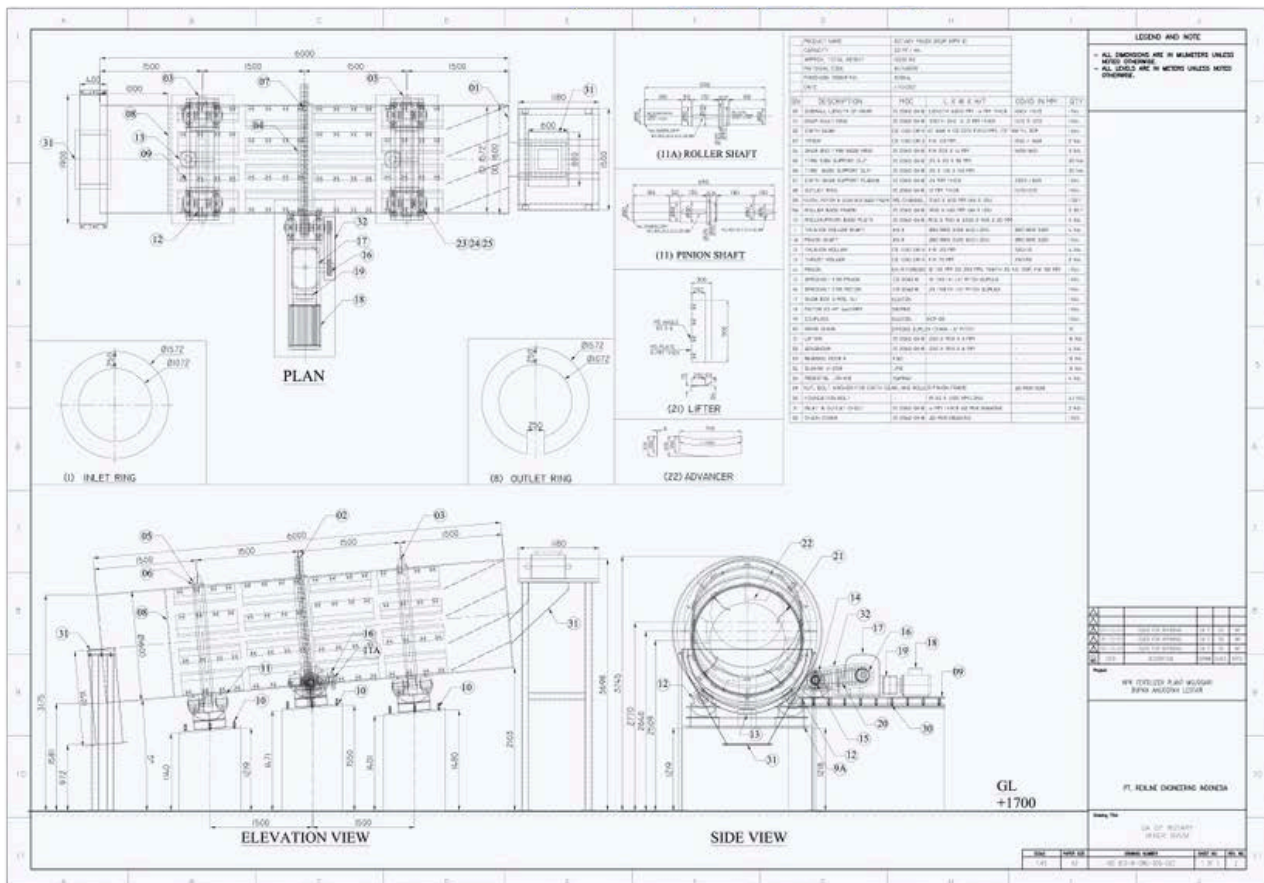
FERTILIZER PROCESS HEAVY EQUIPMENT
Rotary Dryer, Rotary Cooler, Rotary Granulator
(3.5m dia x 32m)



IN-HOUSE DESIGN & FABRICATION



DRAWING



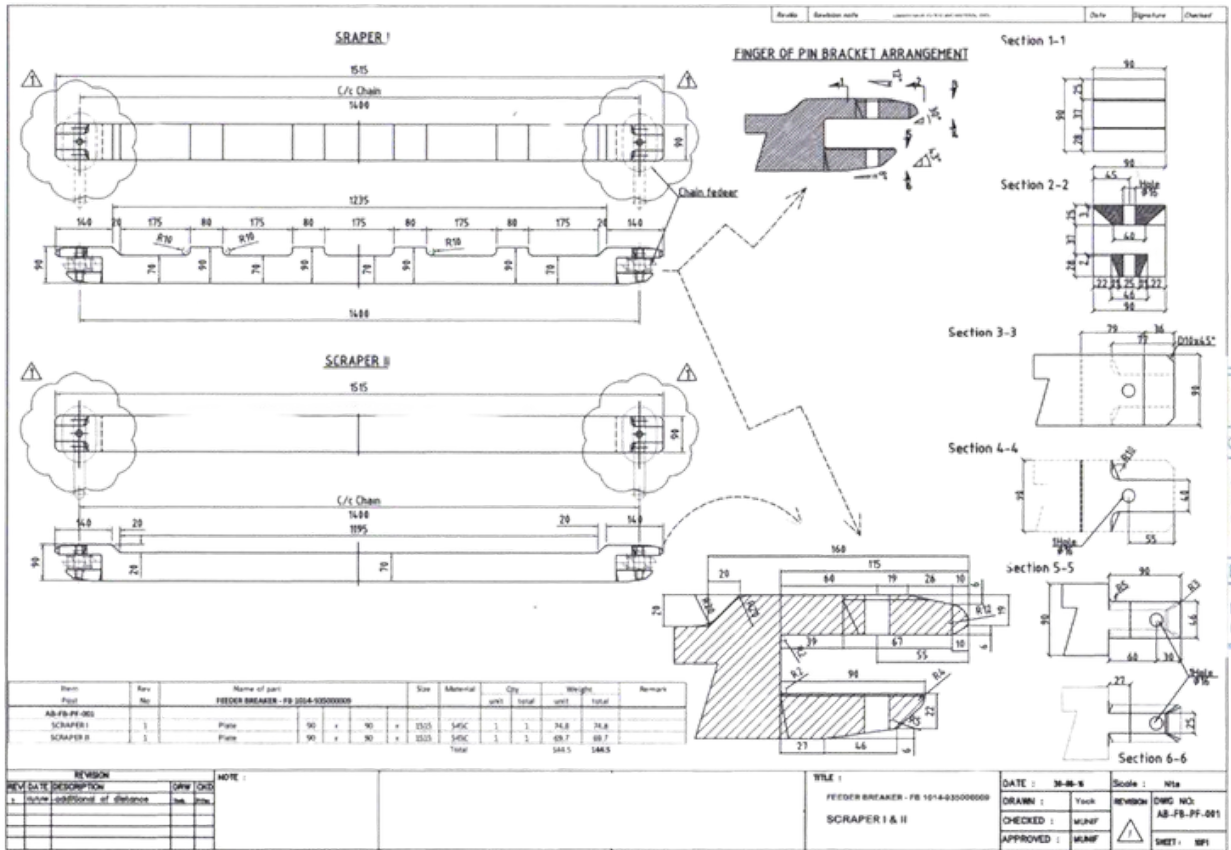
IN-HOUSE DESIGN & FABRICATION

SCRAPPER FLIGHT BAR



IN-HOUSE DESIGN & FABRICATION

DRAWING

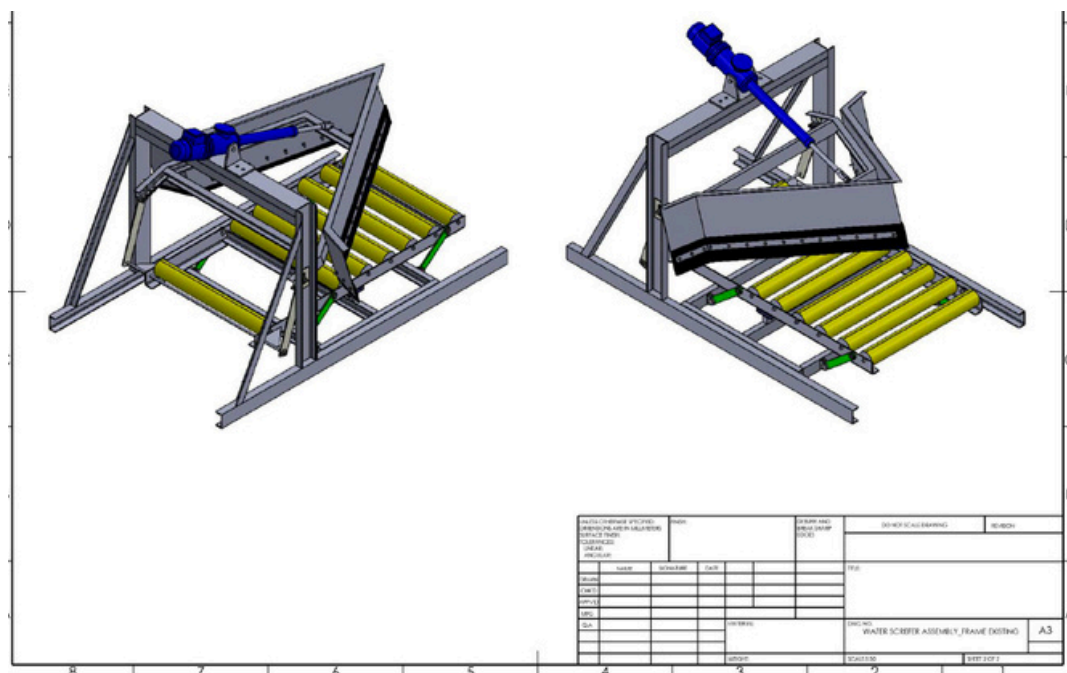


IN-HOUSE DESIGN & FABRICATION

WATER SCRAPER ASSEMBLY



DRAWING

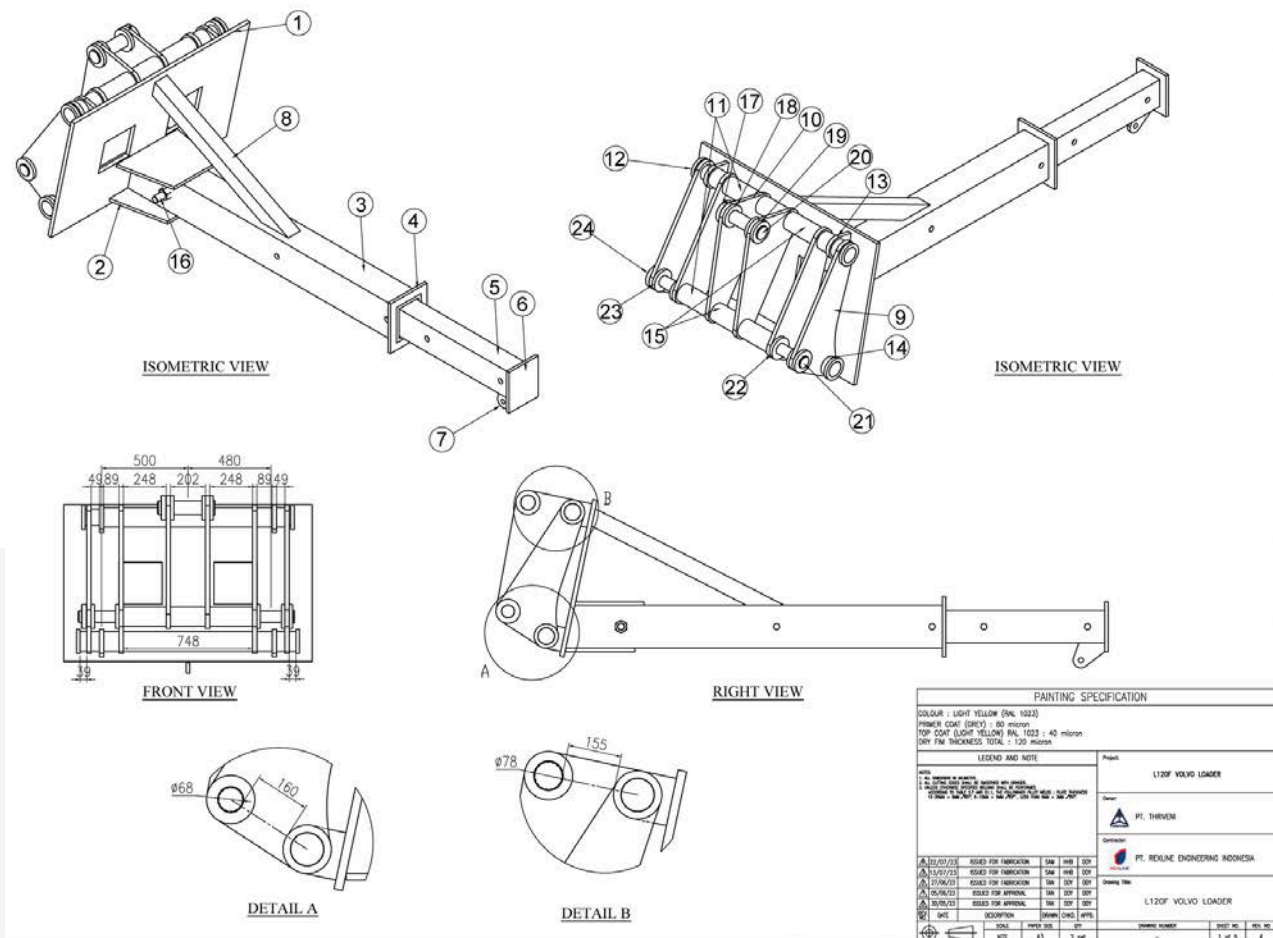


IN-HOUSE DESIGN & FABRICATION

FORKLOADER VOLVO

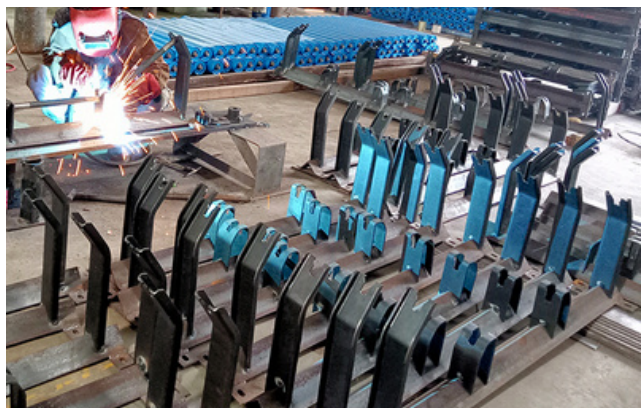


DRAWING



IN-HOUSE DESIGN & FABRICATION

CONVEYOR UPPER STRUCTURE



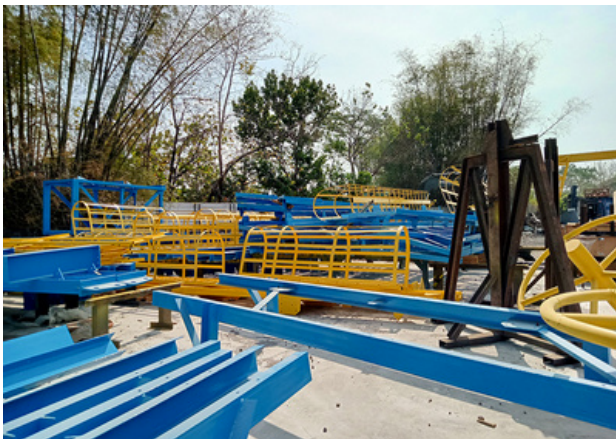
IN-HOUSE DESIGN & FABRICATION

CONVEYOR UPPER STRUCTURE



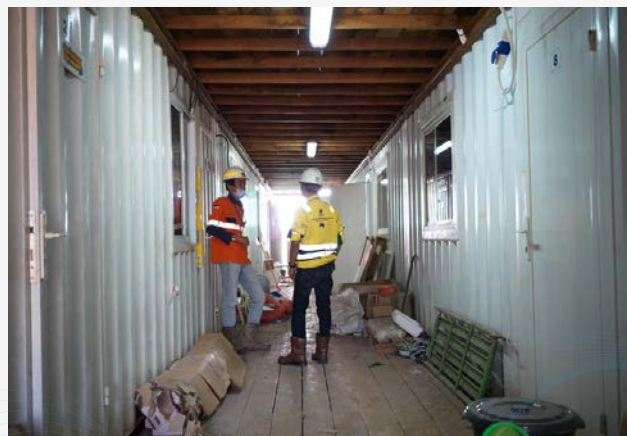
IN-HOUSE DESIGN & FABRICATION

CONVEYOR UPPER STRUCTURE



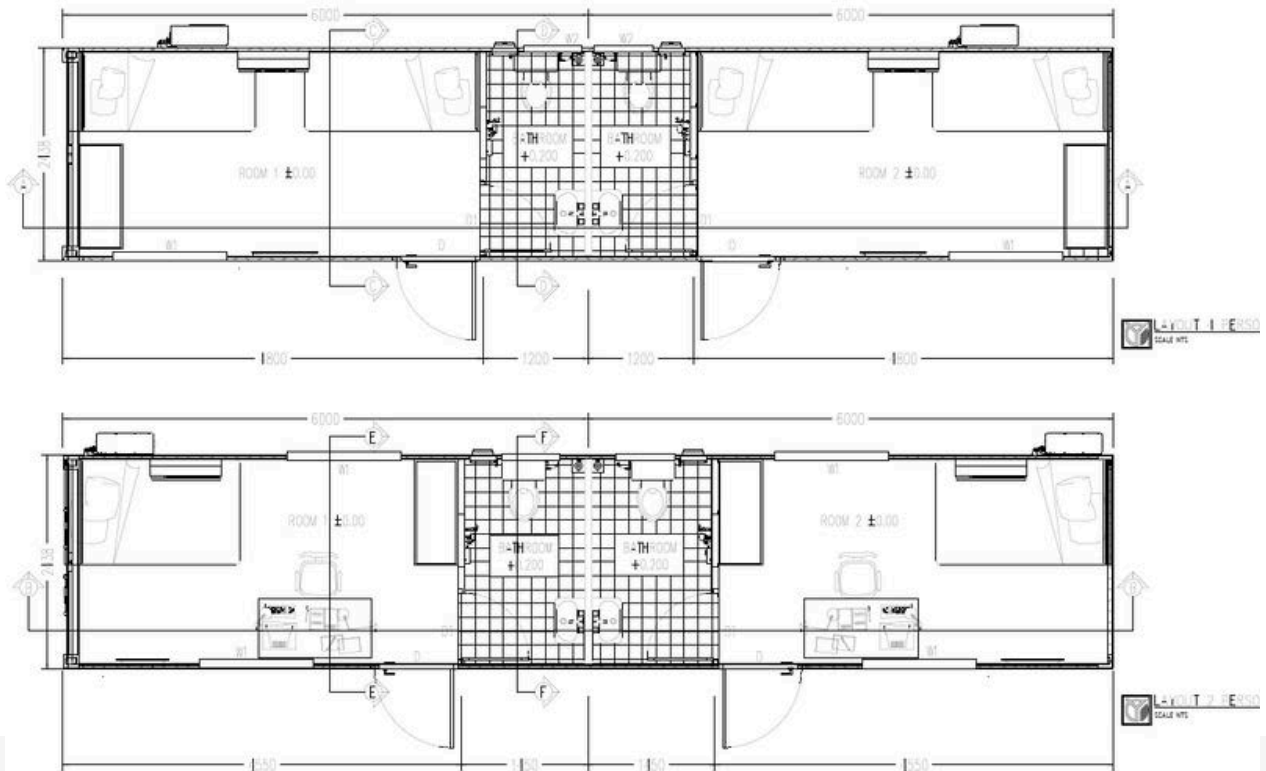
IN-HOUSE DESIGN & FABRICATION

DESIGN & BUILD 40ft CONTAINER OFFICE/CAMP



IN-HOUSE DESIGN & FABRICATION

DRAWING



IN-HOUSE DESIGN & FABRICATION

DESIGN & BUILD FOLDABLE CONTAINER CAMP



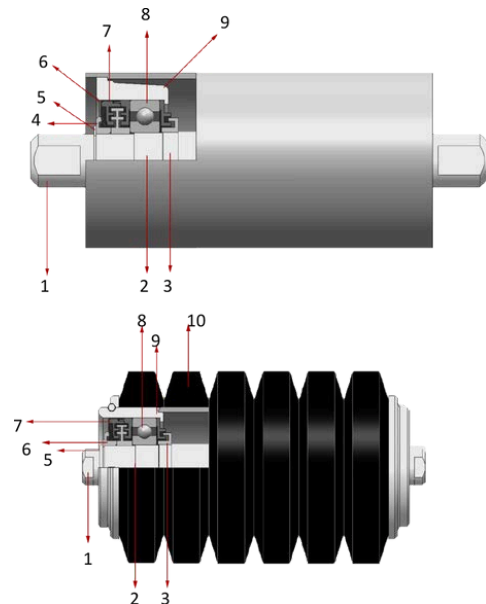
IN-HOUSE DESIGN & FABRICATION

DRAWING

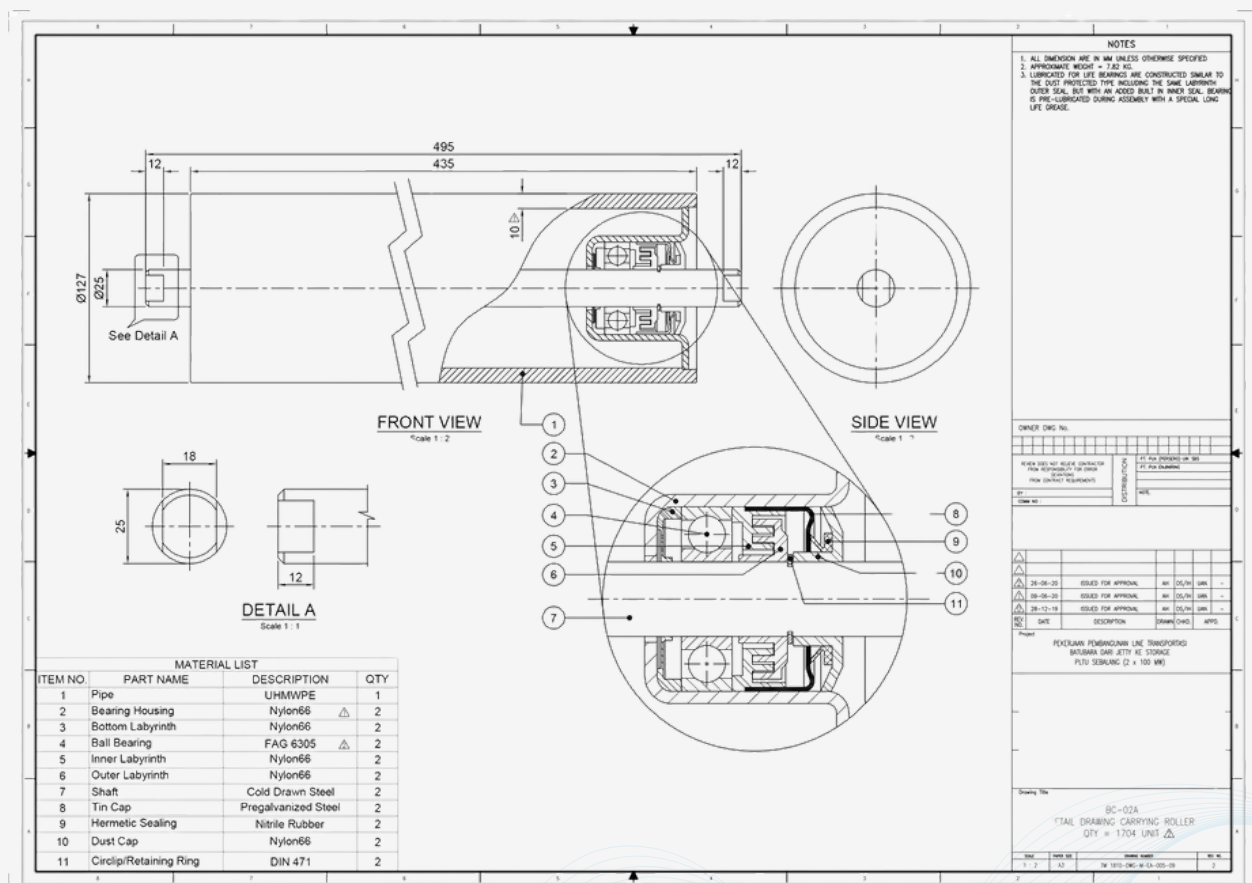


IN-HOUSE DESIGN & FABRICATION

CARRY ROLLER

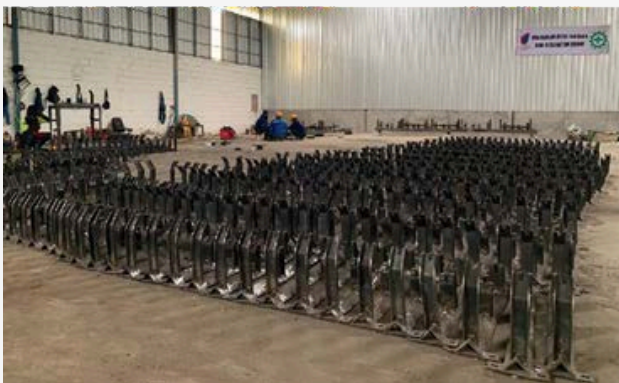


DRAWING

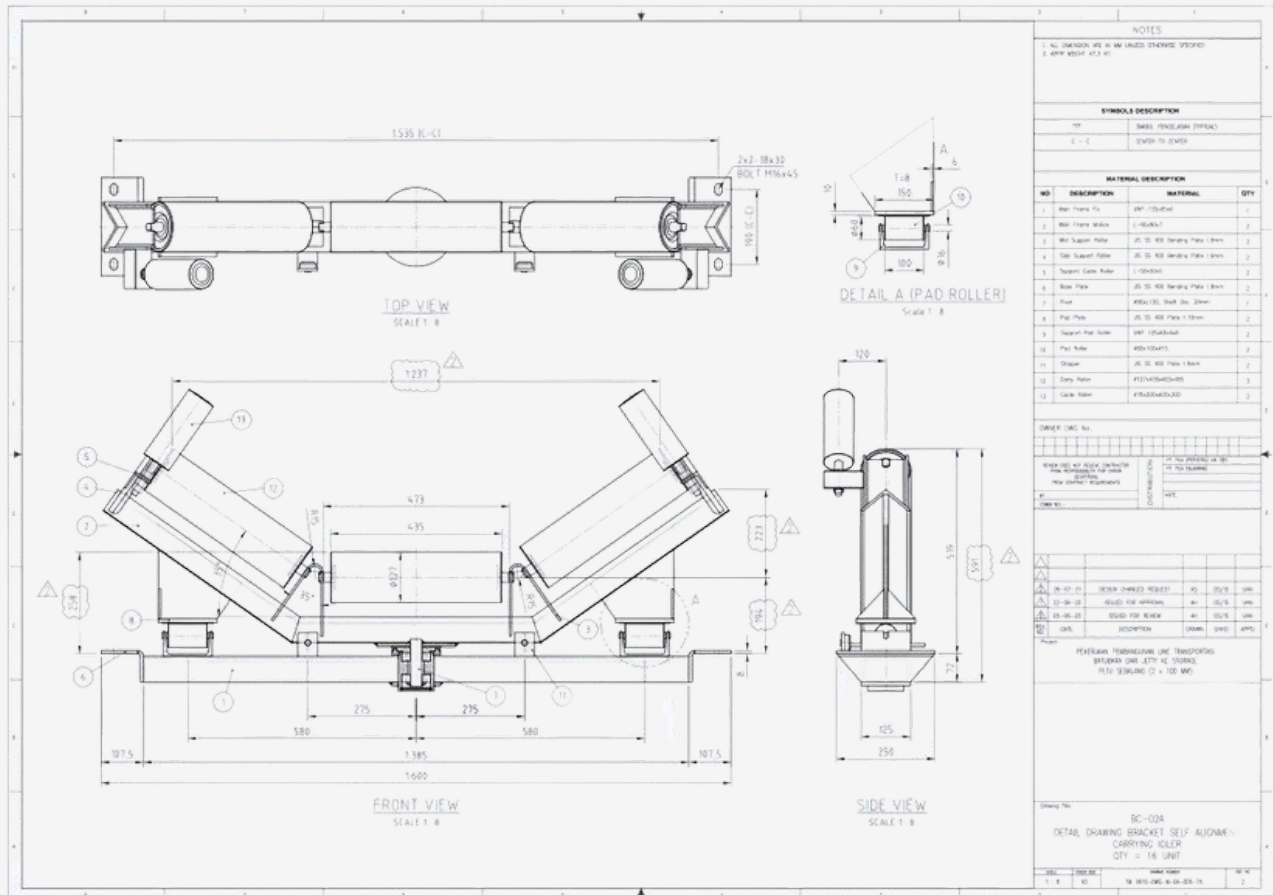


IN-HOUSE DESIGN & FABRICATION

BRACKETS



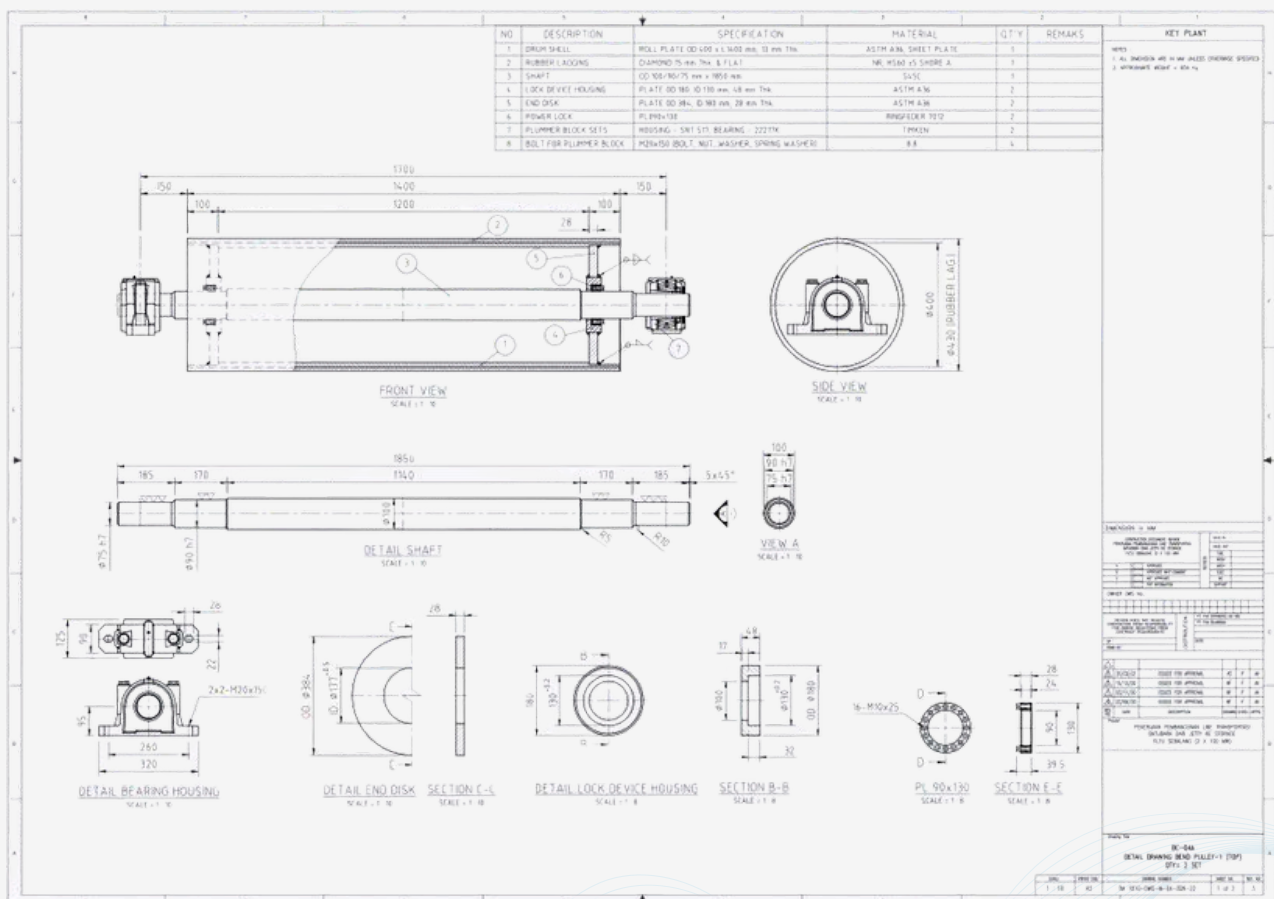
DRAWING



BEND PULLEY



DRAWING



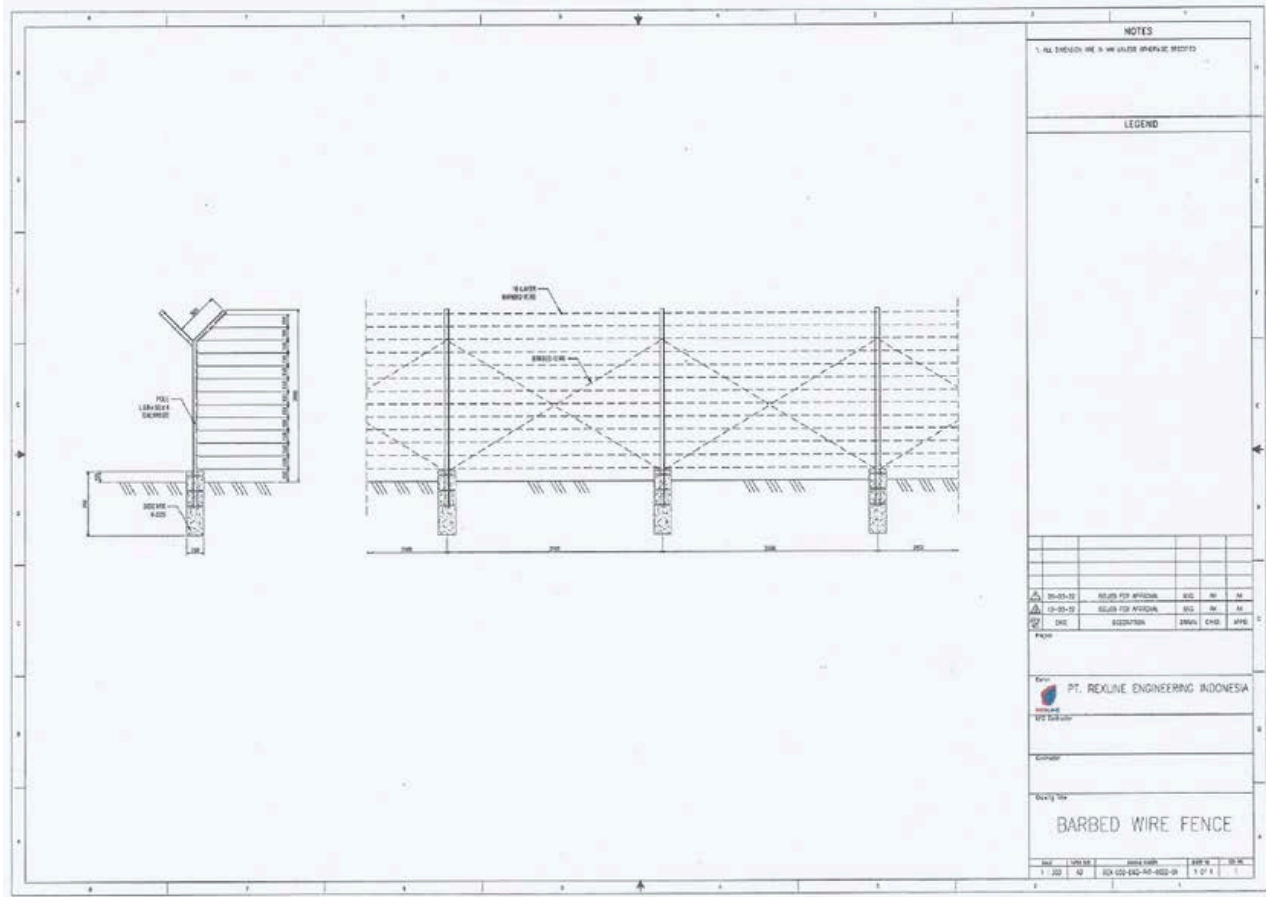
IN-HOUSE DESIGN & FABRICATION

BARBED WIRE FENCE



IN-HOUSE DESIGN & FABRICATION

DRAWING



IN-HOUSE DESIGN & FABRICATION

JETTY PILING

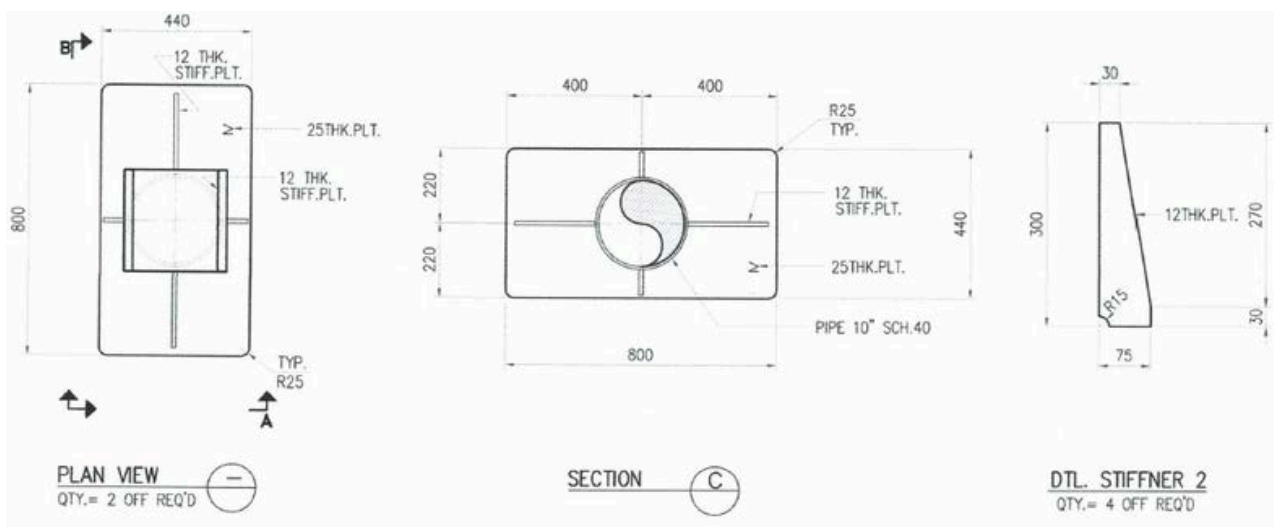
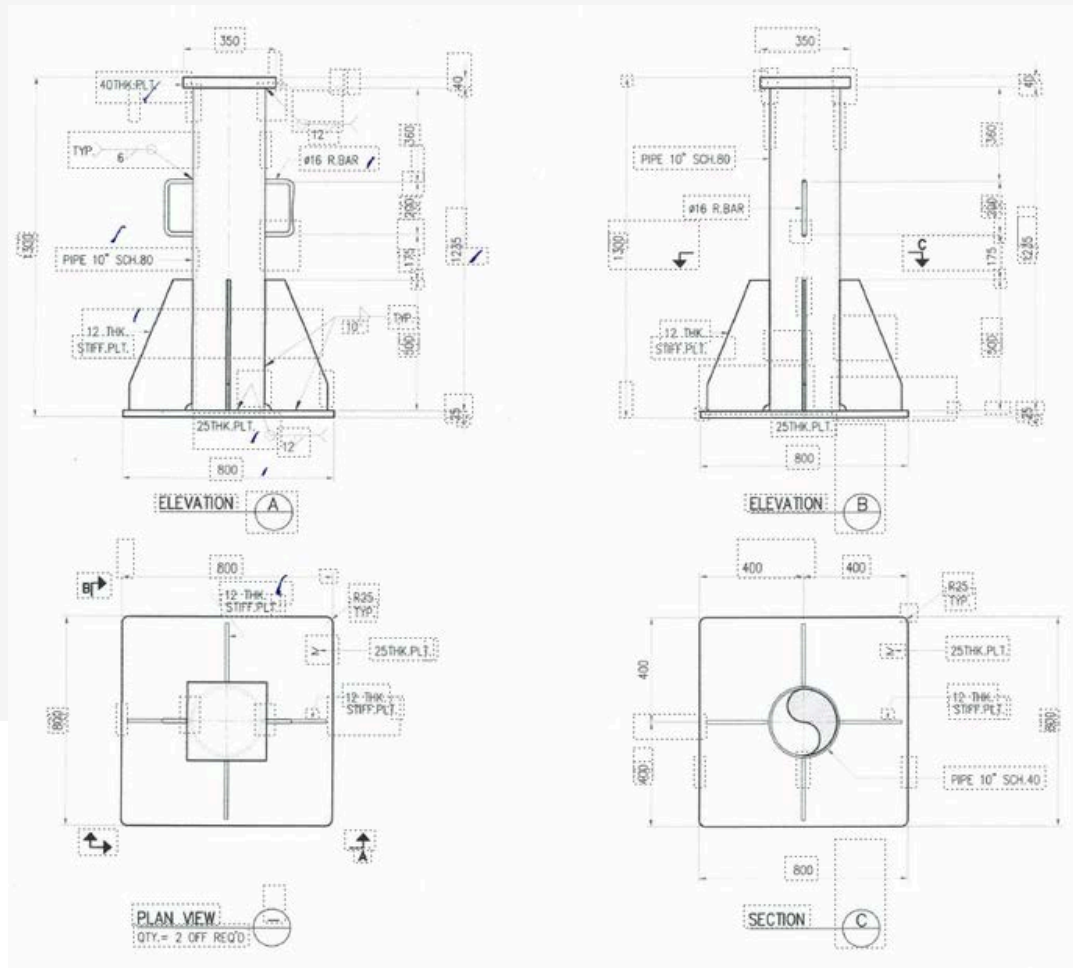


IN-HOUSE DESIGN & FABRICATION

STAND STEEL (Capacity 75-100 tonnage)



DRAWING



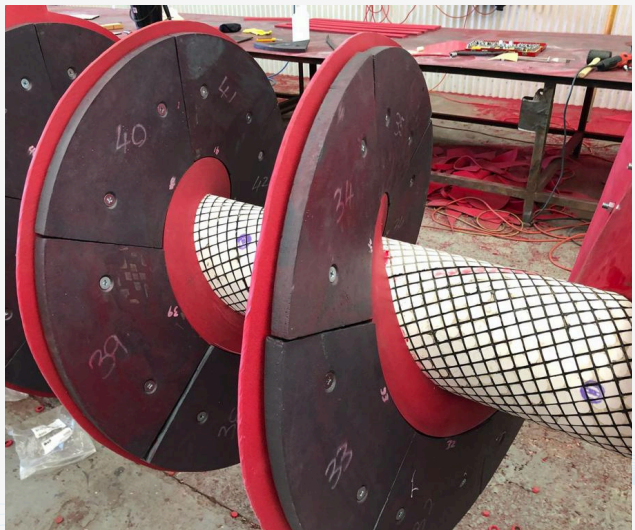
IN-HOUSE DESIGN & FABRICATION

DEGREASING MACHINE



IN-HOUSE DESIGN & FABRICATION

SCREW FEEDER NICKEL MINING & OPERATIONS

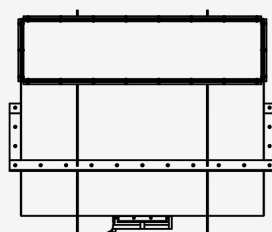
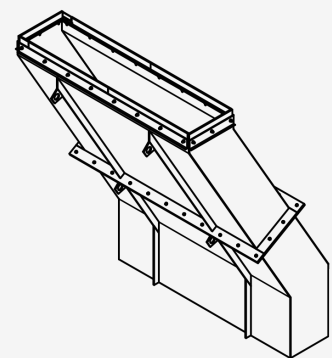
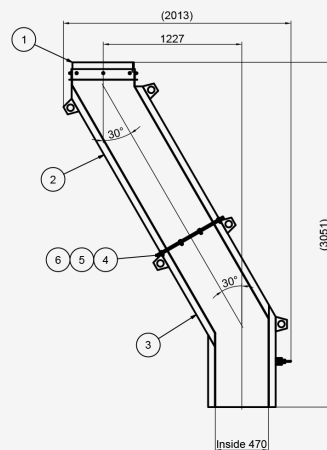
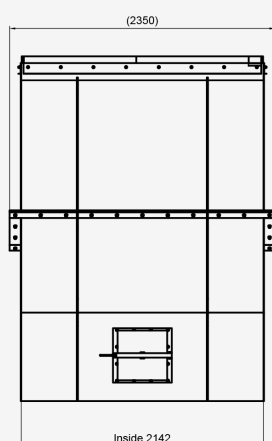


IN-HOUSE DESIGN & FABRICATION

CHUTES



DRAWING





THANK YOU

REXLINE ENGINEERING

CONTACT US :



Call

+62 811 1910 3695



Mail

salesteam@rexlineengineering.com



Web Address

www.rexlineengineering.com



Address (Head Office)

Jl. Raya Kupang Baru No.74, Sonokwijenan, Kecamatan Sukomanunggal, Surabaya, Jawa Timur 60189



Heavy Fabrication

K M10 Jalan Raya Mantub, Takeranklanting, Kec. Tikung, Lamongan, Jawa Timur 62280